



Skills Funding
Agency



Department
for Business
Innovation & Skills

Statistical First Release

Further Education & Skills: Learner Participation, Outcomes and Level of Highest Qualification Held

Publication date:
29th January 2015

Next Updated:
March 2015

Reference: SFA/SFR27

Coverage: England

Theme: Children,
Education and Skills

For further information contact:

Service Desk
servicedesk@sfa.bis.gov.uk
0370 267 0001

Or view our web site at:
<https://www.gov.uk/government/publications/learner-participation-outcomes-and-level-of-highest-qualification-held>

Lead Statistician:
Paula Maratos
paula.maratos@bis.gsi.gov.uk
0114 207 5183

Department for Business,
Innovation and Skills,
Level 2,
1 Victoria Street,
London,
SW1H 0ET

© Skills Funding Agency
2015

This release presents information on adult (19+) government-funded¹ further education (excluding schools and Higher Education) and all age (16+) Apprenticeships in England, between 2009/10 and 2013/14. It also includes provisional data for the first quarter of the 2014/15 academic year.

This release also presents key statistics on the highest level of qualification held by adults in England from 2006 to 2013, calculated from Labour Force Survey (LFS) data. 2013 figures are provisional and subject to revisions.

Key Points

- Provisional data show that for the first quarter of the 2014/15 academic year 1,396,100 adult learners aged 19 and over participated in government-funded further education.
- Provisional data show that 573,700 funded Apprentices participated on an Apprenticeship in the first quarter of the 2014/15 academic year.
- Provisional data show that there were 147,500 Apprenticeship starts in the first quarter of the 2014/15 academic year.
- Provisional data show there were 51,700 learners with a 24+ Advanced Learning Loan in the first quarter of the 2014/15 academic year.
- Provisional data show there were 5,000 Traineeship starts in the first quarter of the 2014/15 academic year.
- The overall 2013/14 Education and Training success rate for government funded adult learners was 87.6 per cent. Whilst not directly comparable with 2012/13 figures due to methodology changes, there was an increase of 0.7 percentage points compared to 2012/13.
- The overall 2013/14 Apprenticeship success rate was 68.9 per cent, a decrease of 3.4 percentage points compared to 2012/13. Decreases were seen for Intermediate and Advanced Apprenticeships but an increase was seen for Higher Apprenticeships. Decreases were seen across all age ranges, in particular for those aged 25+.

¹ Covering the Skills Funding Agency and the Education Funding Agency.

CONTENTS

STATISTICAL COMMENTARY

Glossary of Key Terms	3
-----------------------------	---

FURTHER EDUCATION STATISTICS FOR ENGLAND, 2013/14

Adult Attainment in the Population	5
Success Rates	5
Adult Learner (19+) Participation and Achievement.....	7
Apprenticeships	9
Adult (19+) English and Maths.....	12
Community Learning.....	13
Employer Ownership Pilot.....	13
24+ Advanced Learning Loans	13
Traineeships	14

PROVISIONAL FURTHER EDUCATION STATISTICS FOR ENGLAND, 2014/15.....

Adult Learner (19+) Participation	15
Apprenticeships	15
Adult (19+) English and Maths.....	16
Community Learning.....	16
24+ Advanced Learning Loans	17
Traineeships	17

National Statistics	18
---------------------------	----

Changes included in this SFR	18
------------------------------------	----

Changes in the next SFR	18
-------------------------------	----

SUPPORTING DATA

Scope	19
-------------	----

Data Sources.....	19
-------------------	----

Issues with Using Provisional Data.....	20
---	----

Issues with Comparing Data Across Academic Years.....	21
---	----

Data Definitions	21
------------------------	----

Publication Cycle Across the Year.....	21
--	----

Supplementary Tables.....	22
---------------------------	----

Related National Statistics Releases.....	23
---	----

Other Related Statistics.....	23
-------------------------------	----

Further Education Statistics for Other Countries in the UK.....	24
---	----

Table Guide	25
-------------------	----

Table Footnotes.....	26
----------------------	----

GLOSSARY OF KEY TERMS

Further Education and Skills includes: learners who are studying a course in a FE College, training provider or within their local community; and employees undertaking an Apprenticeship or other qualification in the workplace. For more information, see paragraphs 59 to 61.

Apprenticeships are paid jobs that incorporate on- and off-the-job training leading to nationally recognised qualifications. As an employee, Apprentices earn as they learn and gain practical skills in the workplace. An Apprenticeship framework typically contains the following separately certified elements:

- A knowledge-based element (the theoretical knowledge underpinning a job in a certain occupation and industry, typically certified via a Technical Certificate).
- A competence-based element (the ability to discharge the functions of a certain occupation, typically certified via work-based assessed national vocational qualifications – NVQs).
- Transferable skills (English and maths) – key skills / functional skills.
- A module on employment rights and responsibilities.
- Personal Learning and Thinking Skills (PLTS): independent enquiry, creative thinking, reflective learning, team working, self-management, effective participation.

See <http://www.apprenticeships.org.uk/> for further information.

The government has introduced reforms to Apprenticeships, see:

<https://www.gov.uk/government/consultations/future-of-apprenticeships-in-england-richard-review-next-steps>). As part of these reforms, in future all Apprenticeship standards will be designed by employers. The **Trailblazers**, which began in October 2013, are the first groups of employers to design new standards for their sectors and occupations. For a full list of the standards and assessment plans designed and approved so far, see: <https://www.gov.uk/government/collections/apprenticeship-standards>

Apprenticeship Grant for Employers (AGE 16 to 24) scheme provides Apprenticeship grants with a value of £1,500 to employers with up to 1,000 employees to encourage employers to take on new Apprentices aged 16 to 24. Eligible employers must not have taken on an Apprentice in the previous 12 months. Subject to budget availability and the employer's commitment to support the Apprentice to the end of their programme, any one employer can claim support for up to ten apprentices. AGE 16 to 24 has been extended to the 2015-16 financial year. See:

<http://www.apprenticeships.org.uk/employers/steps-to-make-it-happen/incentive.aspx>

On the **Access to Apprenticeships pathway**, participants use elements of an Apprenticeship framework to brush up skills and workplace experience, with the aim of securing a paid Apprenticeship with an employer as quickly as possible, up to a maximum of six months. Participants are not categorised or counted as an 'Apprentice' until they become employed. This pathway was announced in May 2011 and closed to new starts end of December 2013.

Employer Ownership Pilot offers all employers in England direct access to up to £340 million of public investment over the period of the pilot (up to 2015/16) to design and deliver their own training solutions.

See: <https://www.gov.uk/government/publications/employer-ownership-of-skills-pilot>

Education and Training covers further education learning delivered mainly in a classroom, workshop, or through distance or e-learning. See: [Data Dictionary - Business Definitions - Learner Responsive Business Definition](#)

Workplace Learning covers a broad range of training including basic skills, Level 2, Level 3 and higher-level skills. Training is mainly delivered through the workplace (but excludes Apprenticeships). Between 2008/09 and 2010/11 this included Train to Gain programme, Employability Skills Pilot and other programmes such as Programmes for the Unemployed. From 2011/12 it includes all training mainly delivered through the workplace (excluding Apprenticeships).

English and Maths qualifications (previously Skills for Life) are designed to give people the reading, writing, maths and communication skills they need in everyday life, to operate effectively in work and to help them succeed on other training courses. See: [Skills Funding Agency - Providers - Our programmes - Basic Skills - Basic Skills](#)

Offender Learning aims to ensure offenders have the skills that will enable them to gain worthwhile, sustainable employment and in-so-doing reduce the likelihood of re-offending. The Offender Learning and Skills Service (OLASS) funds a wide range of learning aims for adults (aged 18 and over) in custody in prisons in England, including awards and units, with a focus on addressing English and maths at the start of a sentence and vocational skills in the run-up to release.

Community Learning funds a wide range of non-formal courses, ranging from personal development through to older people's learning, IT courses, employability skills, family learning and activities to promote civic engagement and community development. Courses may be offered by local authorities, colleges, and voluntary and community groups, and include activity specifically targeted at deprived areas and disadvantaged groups. See: <http://www.gov.uk/government/collections/community-learning-government-funding>

24+ Advanced Learning Loans - Loans are available for eligible learners, aged 24 and above studying full Level 3 and Level 4 qualifications, to help meet up-front course costs. See: <https://www.gov.uk/government/collections/sfa-24-advanced-learning-loans>

Full Level 2 is equivalent to an NVQ at Level 2, or 5 GCSEs. The widths of all of a learner's Level 2 aims are summed to establish whether a learner is taking a full Level 2 programme. **Full Level 3** is equivalent to an NVQ at Level 3, or 2 A-Levels. The widths of all a learner's Level 3 aims are summed to establish whether a learner is taking a full Level 3 programme.

Traineeships were introduced in the 2013/14 academic year to provide young people with essential work preparation, English, maths and work experience to secure an apprenticeship or other work.

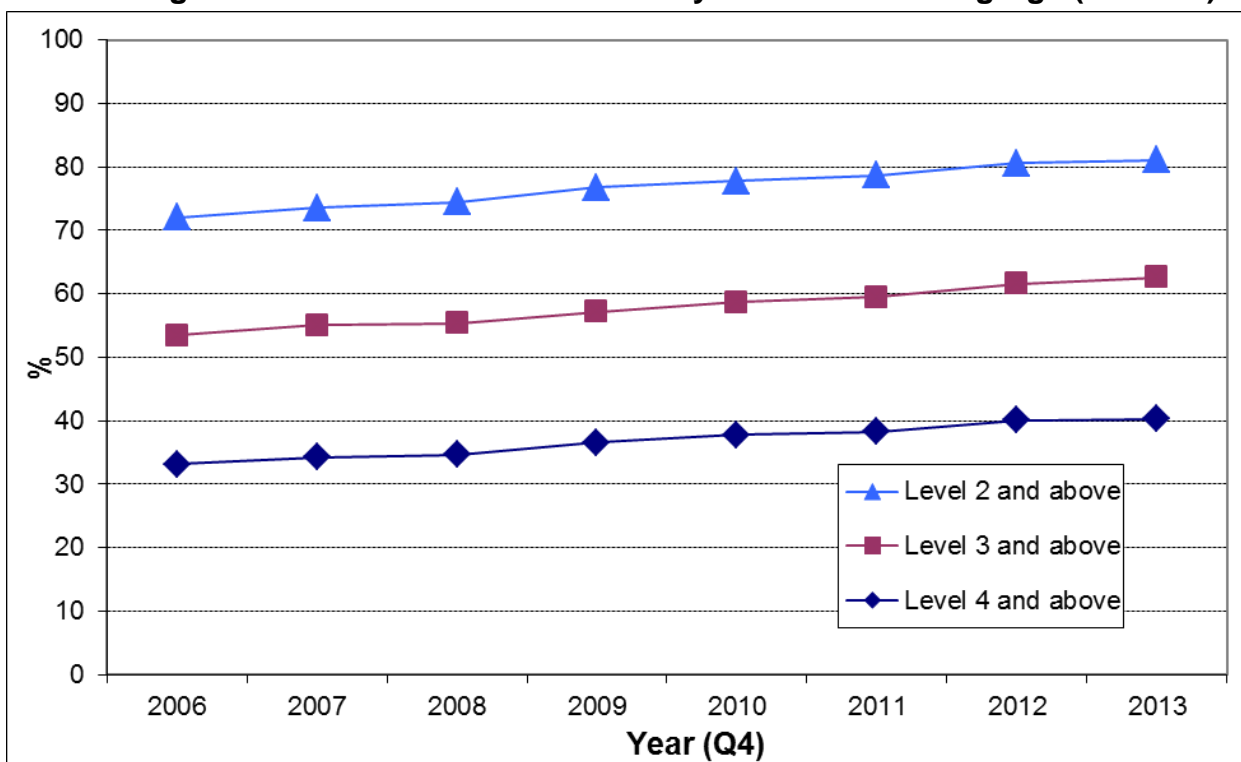
Academic year runs from 1st August to 31st July (except LFS figures in Tables 13 and 14 which are calendar year, and Ofqual figures in Table 15 which run from 1st October to 30th September).

FURTHER EDUCATION STATISTICS FOR ENGLAND, 2013/14

Adult Attainment in the Population

- The Labour Force Survey is used to measure the level of adult educational attainment in the population. Provisional data for 2013 show that of men aged 19 to 64 and women aged 19 to 59 [Table 13.1]:
 - 81.1 per cent were qualified to at least Level 2;
 - 62.6 per cent were qualified to at least Level 3;
 - 40.3 per cent were qualified to at least Level 4.
- Data on the highest level of qualification was revised in late 2014 following a reweighting of the Labour Force Survey (LFS) which affects figures from 2001 onwards.

Chart 1: Highest Level of Qualification Held by Adults of Working Age (Revised)

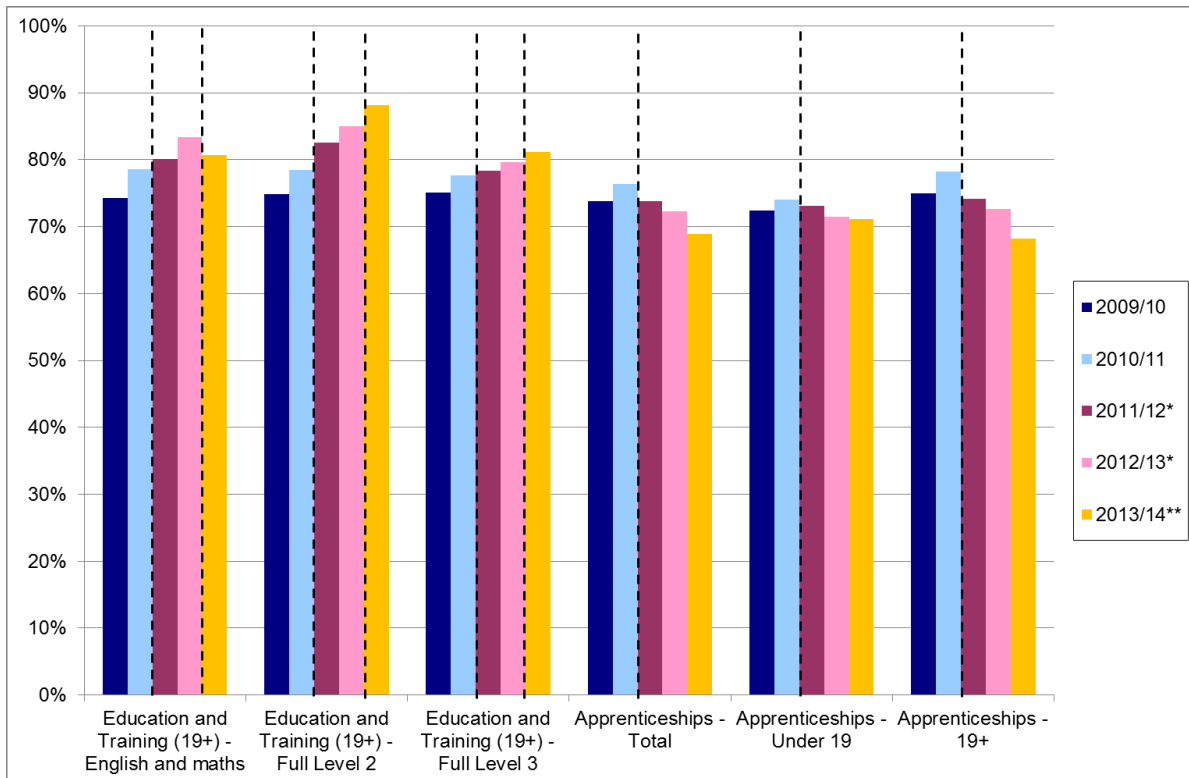


Success Rates

- Success rates are calculated for individual qualifications. They show how many learners that started a qualification went on to successfully complete it. Success rates are typically calculated at a qualification level, but can be aggregated across different types of course, or for particular colleges or providers.
- Prior to 2013/14 success rates were calculated using different methodologies for each of the different strands of further education provision. Employer-based provision (apprenticeships and workplace learning (WPL)) used a primary *Overall* success rate measure (based on the later of the actual and planned end dates) and a secondary *Timely* measure (based on the planned end date). However Education and Training (E&T) provision had a different measure which was based upon the learning planned end date.

5. In the 2013/14 academic year the methodologies were aligned to give a consistent method of calculation across all provision areas, following changes to government-funded learning provision. E&T provision has adopted the Overall and Timely measures as used in apprenticeships and WPL. The Overall measure will be the principal measure and the one reported in this SFR, and will be used to assess the quality of provision against the minimum standards that are expected for funded training. The Timely measure will also be produced as a supporting measure.
6. The change in E&T methodology causes a break in the time series for these statistics and means that the qualification success rates for 2013/14 cannot be directly compared with those from the previous years. See <https://www.gov.uk/government/publications/sfa-qualification-success-rates-rationale-for-2013-to-2014> for more details of the changes.
7. Chart 2 shows that adult (19+) Education and Training Success Rates have risen each year between 2009/10 and 2013/14 for Full Level 2s and Full Level 3s, but have decreased for English and maths between 2012/13 and 2013/14. Success rates for Apprenticeships rose between 2009/10 and 2010/11, but have decreased in 2011/12, 2012/13 and 2013/14 [Table 12].

Chart 2: Success Rates



***Note: Success Rates for 2011/12 onwards are not directly comparable with earlier years.**

****Note: E&T Success Rates for 2013/14 are not directly comparable with earlier years. See paragraphs 4-6 for more information**

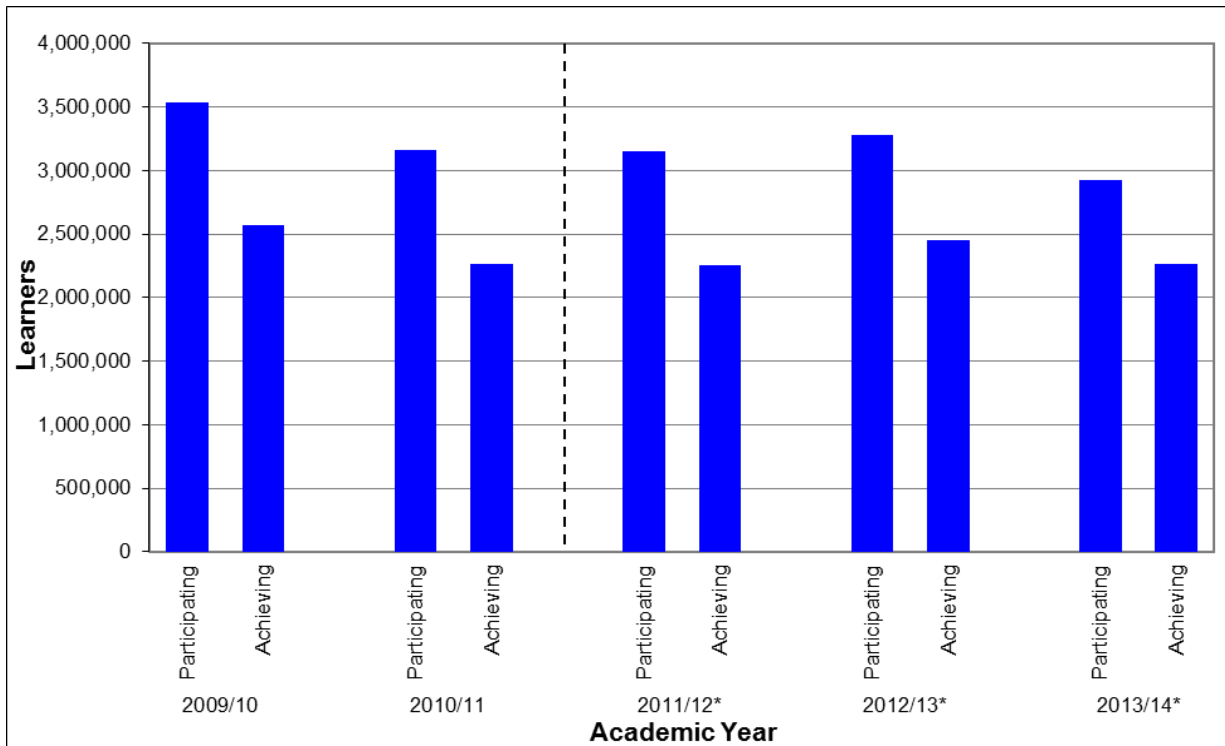
8. In 2013/14, adult (19+) Education and Training success rates [Table 12.1] were:
 - 87.6 per cent for all Education and Training, an increase of 0.7 percentage points compared to 2012/13;
 - 80.7 per cent for English and Maths qualifications, a decrease of 2.7 percentage points compared to 2012/13;

- 86.4 per cent for Level 2 qualifications, an increase of 0.9 percentage points compared to 2012/13 (88.2 per cent for full Level 2, an increase of 3.2 percentage points);
 - 82.3 per cent for Level 3 qualifications, an increase of 0.7 percentage points compared to 2012/13 (81.2 per cent for full Level 3, an increase of 1.6 percentage points).
9. In 2013/14, Apprenticeship success rates [Table 12.2] were:
- 68.9 per cent for all Apprenticeships, a decrease of 3.4 percentage points compared to 2012/13;
 - 68.8 per cent for Intermediate Level Apprenticeships, a decrease of 3.2 percentage points compared to 2012/13;
 - 69.1 per cent for Advanced Level Apprenticeships, a decrease of 3.9 percentage points compared to 2012/13;
 - 71.3 per cent for Higher Apprenticeships, an increase of 1.1 percentage points compared to 2012/13;
-
- 68.2 per cent for Apprenticeships by those aged 19 and over, a decrease of 4.4 percentage points compared to 2012/13;
 - 71.1 per cent for Apprenticeships by those aged under 19, a decrease of 0.4 percentage points compared to 2012/13.

Adult Learner (19+) Participation and Achievement

10. Chart 3 shows that the total number of adult learners participating in government-funded further education in 2013/14 was 2,929,600, a decrease of 10.7 per cent on 2012/13 [Table 1.1]. The total number of adult learners achieving a government-funded further education qualification was 2,265,000 in 2013/14, a decrease on 2012/13 though an increase on 2011/12 [Table 1.2].

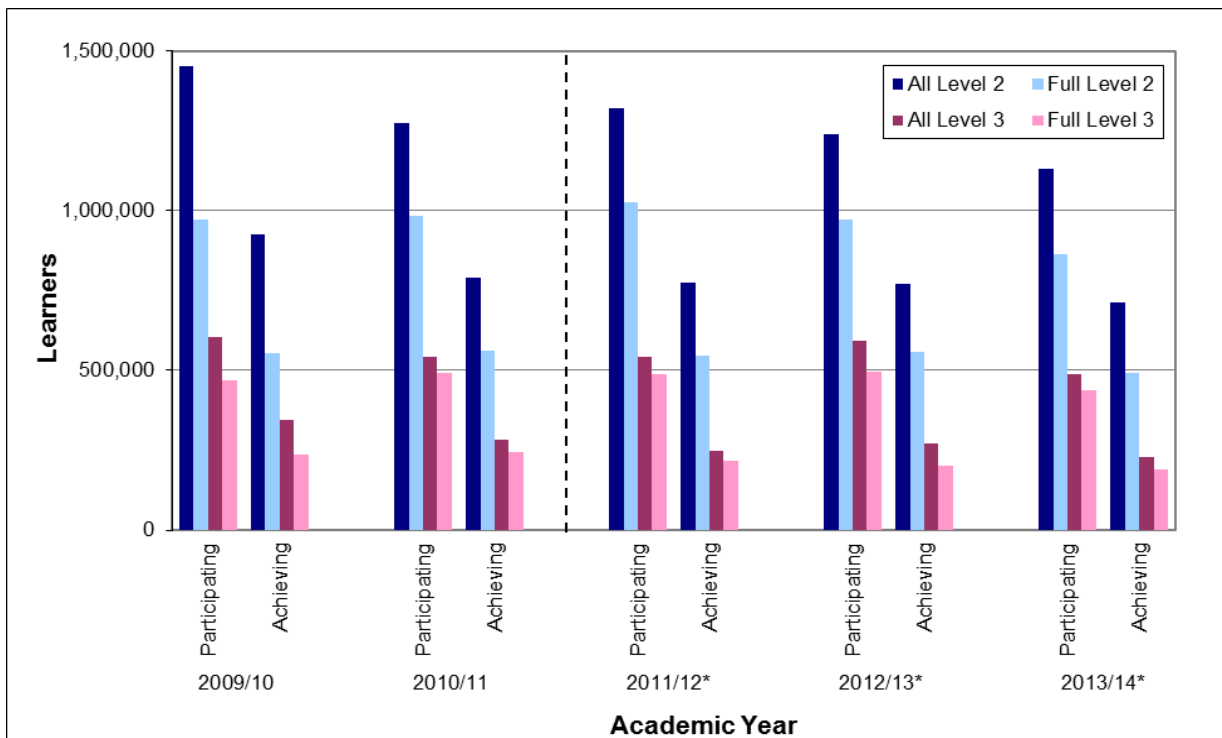
Chart 3: Adult Learner (19+) Participation and Achievement in Government-funded Further Education



***Note: Learner Numbers for 2011/12 onwards are not directly comparable with earlier years. See paragraph 70 onwards for more information.**

11. Chart 4 shows that the number of adult learners participating on government-funded further education Level 2 courses decreased between 2009/10 and 2013/14 with an 8.7 per cent decrease seen in the most recent year. The number participating in full Level 2 courses fell by 11.2 per cent between 2012/13 and 2013/14.
12. The number of adult learners participating in Level 3 courses fell by 17.9 per cent between 2012/13 and 2013/14, following a rise previously. Participation in full Level 3 courses fell by 11.3 per cent.
13. The number of adult learners participating in below Level 2 courses (excluding English and maths) remained steady in 2013/14 at 759,900, whilst the number participating in English and maths fell by 9.3% between 2012/13 and 2013/14 to 951,800. There was a sharp fall in the number of learners participating on Level 4+ courses, from 50,000 in 2012/13 to 36,400 in 2013/14. [Tables 1.1 and 1.2].

Chart 4: Adult (19+) Learner Participation and Achievement in Government-funded Further Education by Level



*Note: Learner Numbers for 2011/12 onwards are not directly comparable with earlier years. See paragraph 70 onwards for more information.

14. Of the 2,929,600 adult learners participating in further education in 2013/14:

- 56.6 per cent were female and 43.4 per cent were male;
- 15.0 per cent declared a learning difficulty and/or disability;
- 19.2 per cent were from a Black or Minority Ethnic background (including Mixed, Asian, Black and Other Ethnic Group learners) [Table 2];
- 581,900 learners aged 19+ benefited from support for the unemployed. These are defined as those learners reporting that they were in receipt of Employment and Support Allowance - Work Related Activity Group (ESA WRAG), Jobseeker's Allowance (JSA) or Universal Credit (if unemployed and looking for work). These figures are revised since the November 2013 publication to include those learners in receipt of Universal Credit [see footnote to Table 1].

15. In 2013/14 there were 95,300 offenders aged 18 and over in the prison system participating in learning, an increase of 6.0 per cent on 2012/13. 79,700 achieved a learning outcome, an increase of 16.6 per cent [Table 7]. These offenders were funded via the Offenders' Learning and Skills Service (OLASS) budget.

Apprenticeships

16. Two measures of Apprenticeships are presented to give a transparent view of the changes and trends in Apprenticeships in England:

- Participation refers to the number of people who are undertaking an Apprenticeship in a given time period. This measure is helpful for quantifying the number of people on an Apprenticeship programme throughout the academic year. An Apprentice studying towards more than one Apprenticeship at the same level is counted once.

- Starts refer to the number of programmes that begin in a given time period. This measure is helpful in determining the take-up of programmes. An Apprentice is counted for each Apprenticeship they start.

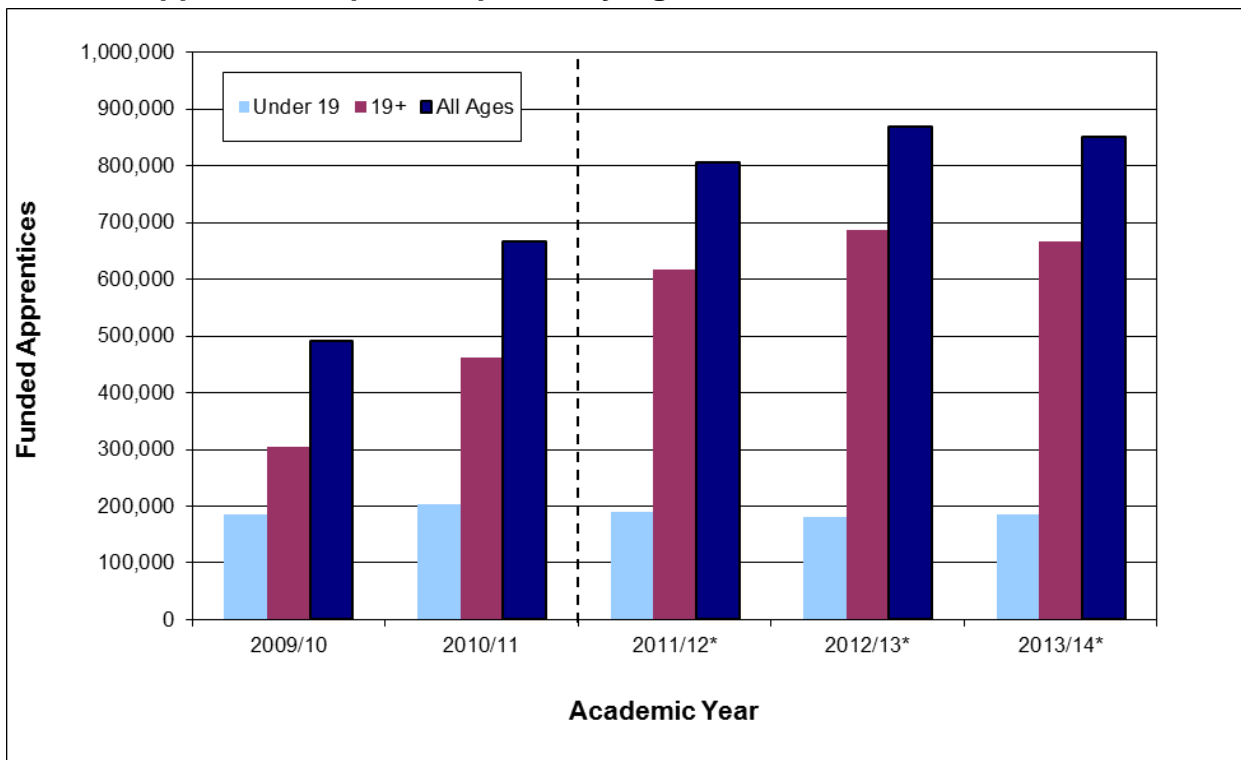
17. The Apprenticeship programme expanded rapidly since 2009/10 as a result of increased government investment in adult Apprenticeships. More recently Apprenticeship policy has focused on raising standards, improving the quality and introducing minimum durations of Apprenticeships. This means some learners find it more difficult or take longer to complete their Apprenticeship.

18. 24+ Advanced Learning Loans were introduced in August 2013, and withdrawn for Apprenticeships in March 2014. This appears to have affected learner numbers on Level 3 and above courses and Apprenticeships aged 24+ in the 2013/14 academic year.

Participation

19. Chart 5 shows that all age Apprenticeship participation has increased since 2009/10 to 851,500 Apprenticeships in 2013/14, although there was a small decrease between 2012/13 and 2013/14. Both under 19 and 19-24 Apprenticeship participation increased between 2012/13 and 2013/14, so the decrease was due to a fall in 25+ Apprenticeships. [Table 5].

Chart 5: Apprenticeship Participation by Age



***Note: Learner Numbers for 2011/12 onwards are not directly comparable with earlier years. See paragraph 70 onwards for more information.**

20. 503,500 Apprentices were participating on an Intermediate Level Apprenticeship in 2013/14, a slight increase on 2012/13 figures. An increase was seen on Higher Level Apprenticeships to 18,100 in 2013/14, but there was a decrease on Advanced Level Apprenticeships to 351,900. [Table 5].

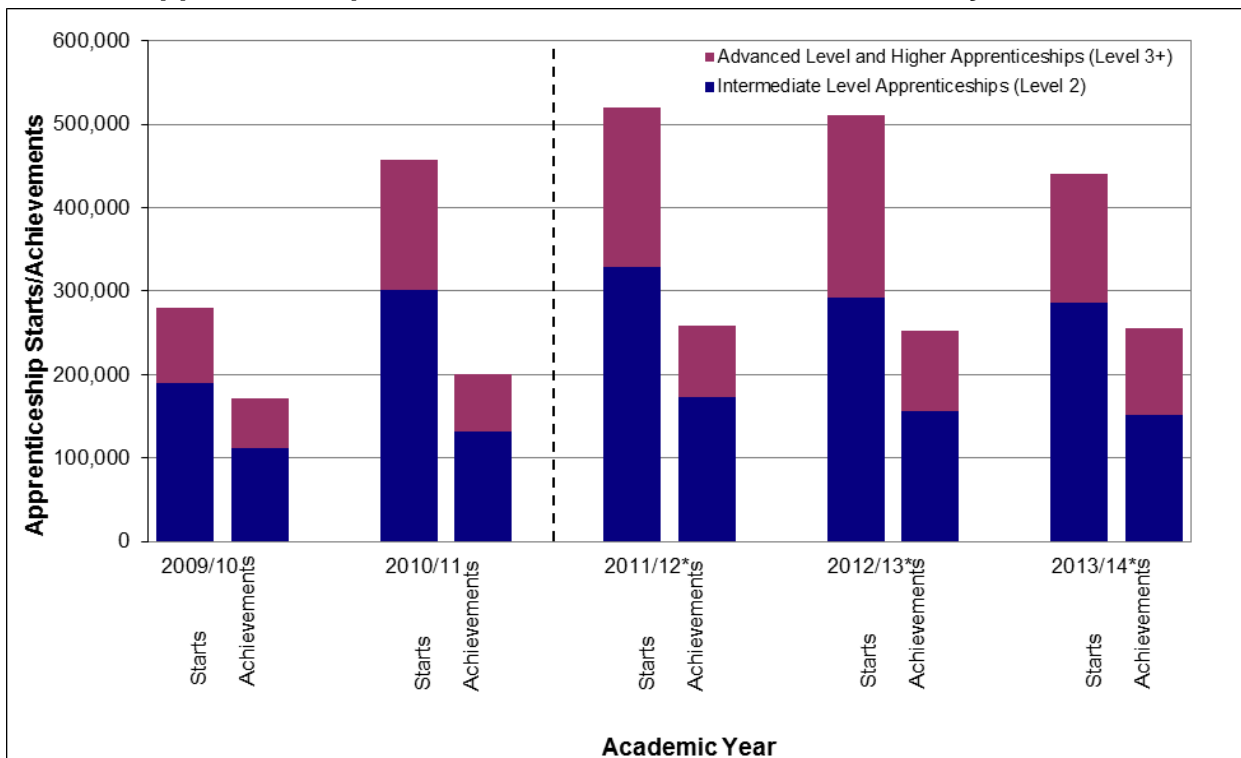
21. Of the 851,500 Apprenticeships participating in 2013/14:

- 51.9 per cent were female and 48.1 per cent were male;
- 8.3 per cent declared a learning difficulty and/or disability; and
- 9.9 per cent were from a Black or Minority Ethnic background (including Mixed, Asian, Black and Other Ethnic Group learners) [Table 4]

Starts and Achievements

22. Chart 6 shows that following a period of strong growth, there was a decline in Apprenticeship starts in 2013/14, again mostly due to a fall at Advanced Level. However achievements have remained strong, with a small increase seen in 2013/14 [Table 6].

Chart 6: Apprenticeship Starts and Framework Achievements by Level



*Note: Starts and achievements for 2011/12 onwards are not directly comparable with earlier years. See paragraph 70 onwards for more information.

23. The length of an Apprenticeship is typically more than a year and an Apprenticeship framework achievement is recorded against the year it was achieved, not the year it was started. Because of this, the number of achievements is below the number of starts in Chart 6, as a large volume of learners that have started an Apprenticeship have not yet completed it. Furthermore, some learners may withdraw or fail to complete.

24. There were 440,400 Apprenticeship starts in the 2013/14 academic year, a decrease of 13.7 per cent on 2012/13. This decrease was only seen at age 19+; an increase was seen for those aged under 19. An increase was seen overall in Apprenticeship achievements, to 255,800 in 2013/14. Apprenticeship achievements rose for under 19s and 19-24s, but fell for those aged 25+. [Table 6].

25. In 2013/14, 1,700 Apprenticeships started through the Access to Apprenticeship pathway, of which 1,100 converted to paid employment to complete their Apprenticeship in the usual way. The Access to Apprenticeship pathway closed to new starts at the end of December 2013. [Table 21.2].

Planned Length of Stay

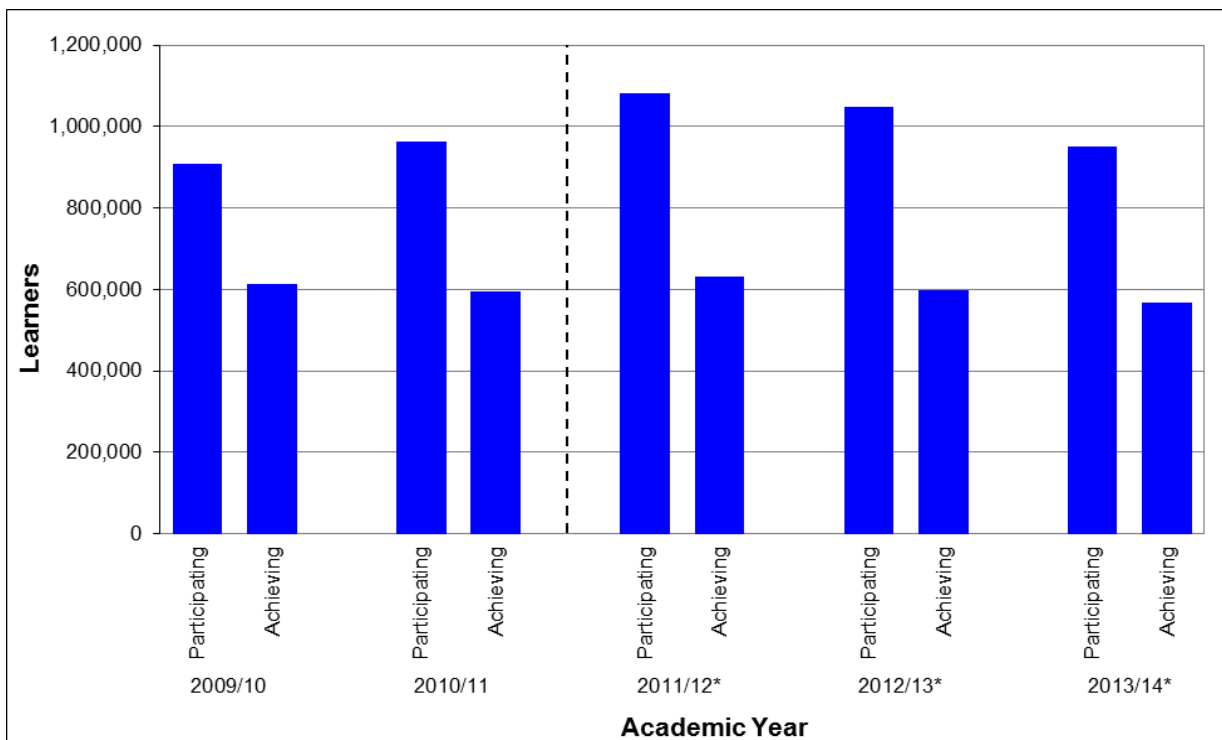
26. In August 2012 a minimum duration of 12 months for Apprenticeships was introduced. Based on the planned end date, the number of Apprenticeship starts with a planned length of stay of fewer than 12 months decreased sharply by 83.2 per cent between 2011/12 and 2012/13 to 34,400 and remained low in 2013/14 at 35,600.

Adult (19+) English and Maths

27. Chart 7 shows that adult learner participation on English and maths courses rose between 2009/10 and 2011/12, but then fell in 2012/13, and again in 2013/14 to 951,800. [Table 3].

28. The number of learners participating on an English course fell by 7.6% between 2012/13 and 2013/14 to 707,500; the number of learners participating on a maths course fell by 10.7% to 667,900 and numbers participating on an ESOL course fell by 4.8% to 139,200. [Table 3].

Chart 7: Adult Learner (19+) Participation and Achievement on English and Maths Courses

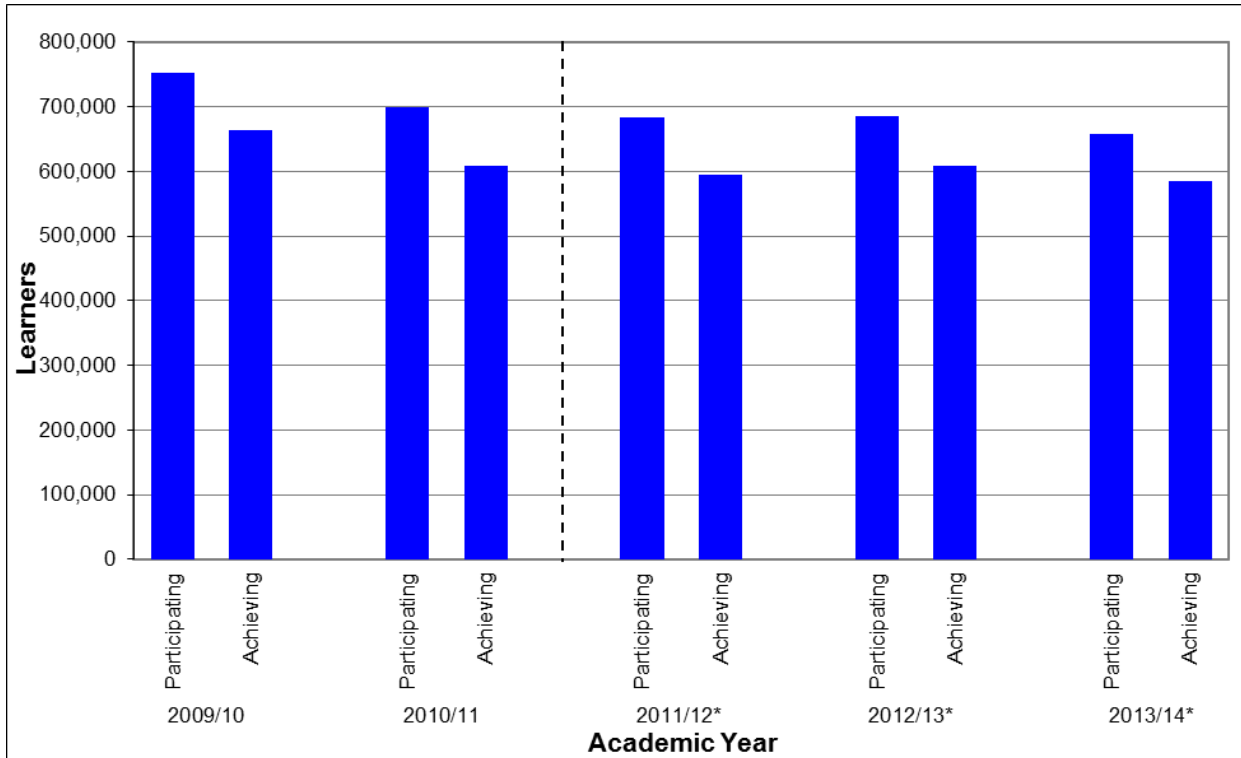


*Note: Learner Numbers for 2011/12 onwards are not directly comparable with earlier years. See paragraph 70 onwards for more information.

Community Learning

29. Chart 8 shows that the number of learners participating on Community Learning courses in 2013/14 decreased by 4.0 per cent to 657,200 after a small rise in the previous year. Achievements fell by 3.8 per cent to 584,900, again following an earlier rise. [Table 9].

Chart 8: Community Learning Participation and Achievement



*Note: Learner Numbers for 2011/12 onwards are not directly comparable with earlier years. See paragraph 70 onwards for more information.

Employer Ownership Pilot

30. Final data show that there were 37,600 Employer Ownership Pilot starts between August 2012 and July 2014 [Table 24]. Of these there were:

- 3,300 Employer Ownership Pilot starts by those aged under 19;
- 7,000 Employer Ownership Pilot starts by those aged 19–24;
- 27,300 Employer Ownership Pilot starts by those aged 25 and over;
- 4,300 Apprenticeship starts.

24+ Advanced Learning Loans

31. Final data for the full 2013/14 academic year show there were 59,100 learners with a 24+ Advanced Learning Loan² [Table 10]. Of these there were:

- 56,400 learners with a 24+ Advanced Learning Loan participating at Level 3;
- 2,700 learners with a 24+ Advanced Learning Loan participating at Level 4+.

² On March 7th 2014 Apprenticeships were removed from the scope of the loans programme. Apprentices who have already received a loan will not need to repay it.

The number of learners with a 24+ Advanced Learning Loan reported through the Individualised Learner Record (ILR) differ from data showing loan applications (<https://www.gov.uk/government/collections/further-education#advanced-learning-loans>) and loans paid (<http://www.slc.co.uk/official-statistics/financial-support-awarded/england-further-education.aspx>)

32. 24+ Advanced Learning Loans Application Information is released monthly. This data relates to applications received for FE provision in the 2013/14 and 2014/15 academic year funded through 24+ Advanced Learning Loans. The data used to produce the publication are sourced from the Student Loans Company (SLC) application database. The data refer to received applications, including those not yet processed, and will therefore be different than actual number of learners participating on a course with a 24+ Advanced Learning Loan.
33. The SLC *24+ Advanced Learning Loans Paid in England* data were released on 29th January 2015. These data refer to all payments made to FE providers on behalf of learners, and numbers of learners will be lower than the ILR numbers. Only payments made between August 2013 and October 2014 inclusive are captured, whilst the ILR captures learners on a course with a 24+ Advanced Learning Loan that started during this period, including some where the first scheduled payment date was beyond the end of October 2014.

Traineeships

34. Final data for the full 2013/14 academic year show that there were 10,400 Traineeship starts [Table 11]. Of these there were:
- 7,000 Traineeships aged under 19;
 - 3,400 Traineeships aged 19-23.

PROVISIONAL FURTHER EDUCATION STATISTICS FOR ENGLAND, 2014/15

35. Data for 2014/15 provide an early view of performance for the first quarter of the academic year (August 2014 to October 2014). Data are provisional because providers may not have reported all their information relating to this period. It is not possible to determine how incomplete the information behind the provisional data is, so the data cannot be directly compared against provisional or final data from earlier academic years. Comparisons can only be made once final returns for the academic year are made by providers (due to be published in November 2015) (See paragraphs 66 to 69 for more information).

Adult Learner (19+) Participation

36. Provisional data show that in the first quarter of the 2014/15 academic year (August 2014 to October 2014) there were 1,396,100 learners aged 19 and over participating in government-funded further education [Table 16]. Of these

- 551,600 participated on a English and maths course;
- 560,800 participated on a Level 2 course, of which 422,200 were on a full Level 2 course;
- 325,500 participated on a Level 3 course, of which 308,300 were on a full Level 3 course;
- 170,700 benefited from support for the unemployed (those nearest the workforce).

37. Provisional data for the first quarter of the 2014/15 academic year (August 2014 to October 2014) show there were 50,800 offenders aged 18 or over in the prison system participating in learning [Table 18]. These offenders were funded via the Offenders' Learning and Skills Service (OLASS) budget. This includes 7,300 learners who sat an English & maths assessment.

Apprenticeships

38. Provisional data for the first quarter of the 2014/15 academic year (August 2014 to October 2014) show that there were 573,700 funded Apprentices participating [Table 19]. Of these there were³:

- 330,500 Intermediate Level Apprentices;
- 233,600 Advanced Level Apprentices;
- 15,400 Higher Apprentices;

- 124,500 Apprentices aged under 19;
- 229,300 Apprentices aged 19–24;
- 219,900 Apprentices aged 25 and over;
- 449,200 Apprentices aged 19 and over.

³ Note that an Apprentice may participate on an Apprenticeship programme at more than one level within an academic year

39. Provisional data for the first quarter of the 2014/15 academic year (August 2014 to October 2014) show that there were 147,500 Apprenticeship starts [Table 20.1]. Of these there were:
- 86,100 Intermediate Level Apprenticeship starts;
 - 57,200 Advanced Level Apprenticeship starts;
 - 4,000 Higher Apprenticeship starts;
- 54,100 Apprenticeship starts by those aged under 19;
- 47,900 Apprenticeship starts by those aged 19–24;
- 45,500 Apprenticeship starts by those aged 25 and over;
- 93,500 Apprenticeship starts by those aged 19 and over.
40. Provisional data for the first quarter of the 2014/15 academic year (August 2014 to October 2014) show that there were 56,200 Apprenticeship framework achievements [Table 20.2]. Of these there were:
- 34,500 Intermediate Level Apprenticeship framework achievements;
 - 21,000 Advanced Level Apprenticeship framework achievements;
 - 700 Higher Apprenticeship framework achievements;
- 17,600 Apprenticeship framework achievements by those aged under 19;
- 19,100 Apprenticeship framework achievements by 19–24 year olds;
- 19,600 Apprenticeship framework achievements by those aged 25 and over;
- 38,700 Apprenticeship framework achievements by those aged 19 and over.
41. Provisional data show that there were 106,700 Apprenticeship starts for which a payment was made through the Apprenticeship Grant for Employers (AGE 16 to 24) scheme between February 2012 and October 2014. A further 24,300 were in the pipeline (started but not yet paid) [Table 21.1].

Adult (19+) English and Maths

42. Provisional data for the first quarter of the 2014/15 academic year (August 2014 to October 2014) show that 551,600 learners aged 19 and over participated on an English and maths course [Table 17]. Of these:
- 402,600 participated on an English course;
 - 372,500 participated on a maths course;
 - 72,400 participated on an English for Speakers of Other Languages (ESOL) course.

Community Learning

43. Provisional data for the first quarter of the 2014/15 academic year (August 2014 to October 2014) show that 219,400 learners participated on a Community Learning course [Table 23]. Of these:
- 182,300 took a Personal and Community Development Learning course;
 - 11,600 took a Neighbourhood Learning in Deprived Communities course;
 - 10,900 took a Family English, Maths and Language course;
 - 16,800 took a Wider Family Learning course.

24+ Advanced Learning Loans

44. Provisional data for the first quarter of the 2014/15 academic year (August 2014 to October 2014) show that there were 51,700 learners with a 24+ Advanced Learning Loan [Table 25]. Of these there were:

- 48,400 learners with a 24+ Advanced Learning Loan participating at Level 3; and
- 3,400 learners with a 24+ Advanced Learning Loan participating at Level 4+.

45. The number of learners with a 24+ Advanced Learning Loan reported through the Individualised Learner Record (ILR) differ from data showing loan applications (<https://www.gov.uk/government/collections/further-education#advanced-learning-loans>) and loans paid in England (<http://www.slc.co.uk/official-statistics/financial-support-awarded/england-further-education.aspx>).

46. *24+ Advanced Learning Loans Application Information* is released monthly. This publication presents data relating to applications received for FE provision in the 2014/15 academic year funded through 24+ Advanced Learning Loans. The data used to produce the publication are sourced from the Student Loans Company (SLC) application database. The data refer to applications for 24+ Advanced Learning Loans to fund courses starting in the 2014/15 academic year only. Application figures will therefore differ from the number of learners with a 24+ Advanced Learning Loan.

47. The SLC *24+ Advanced Learning Loans Paid in England* data were also released on 29th January. These data refer to all payments made to FE providers on behalf of learners, and numbers of learners will be lower than the ILR numbers. Only payments made between August 2013 and October 2014 are captured, whilst the ILR captures learners on a course with a 24+ Advanced Learning Loan that started during this period, including some where the first scheduled payment date is beyond the end of October 2014.

Traineeships

48. Provisional data for the first quarter of the 2014/15 academic year (August 2014 to October 2014) show that there were 5,000 Traineeship starts [Table 26]. Of these there were:

- 3,500 Traineeships aged under 19;
- 1,500 Traineeships aged 19-24.

NATIONAL STATISTICS

49. The United Kingdom Statistics Authority has designated these statistics as National Statistics, in accordance with the Statistics and Registration Service Act 2007 and signifying compliance with the Code of Practice for Official Statistics.
50. Designation can be broadly interpreted to mean that the statistics:
- meet identified user needs;
 - are well explained and readily accessible;
 - are produced according to sound methods; and
 - are managed impartially and objectively in the public interest.
51. Once statistics have been designated as National Statistics it is a statutory requirement that the Code of Practice shall continue to be observed. More information regarding compliance with the Code of Practice is available on our website: <https://www.gov.uk/government/publications/sfr-compliance-with-official-statistics-code-of-practice>

CHANGES INCLUDED IN THIS SFR

52. Education and Training (E&T) and Apprenticeship and Workplace Learning (WPL) Success Rate methodologies have been aligned to give a consistent method of calculation across all provision areas; that is E&T provision has adopted the Overall and Timely measures as used in Apprenticeships and WPL (the Overall measure will be the principal measure and is the one reported in this SFR). The change in E&T methodology causes a break in the time series of these statistics and means that the qualification success rates for 2013/14 cannot be directly compared with those from the previous years. See paragraphs 4 to 6 and <https://www.gov.uk/government/publications/sfa-qualification-success-rates-for-2013-to-2014> for more details of the changes.
53. We had planned to include data on Employer Ownership Pilot starts in Q1 2014/15 in this release but we do not currently have a reliable estimate that represents this period. We will publish a figure once the quality has improved sufficiently.
54. Data on Traineeship starts is included in this SFR at Tables 11 and 26, and data on Traineeship completions and progressions in Q1 2014/15 are published in a separate note at: <https://www.gov.uk/government/statistical-data-sets/fe-data-library-other-statistics-and-research>. Further non-National Statistics traineeships data are available at the same link.
55. Data on the highest level of qualification held has been revised, following a reweighting of the Labour Force Survey (LFS) affecting figures from 2001 onwards.

CHANGES IN THE NEXT SFR

56. The next SFR will be March 2015 and will include provisional FE and Skills data for the first two quarters of the 2014/15 academic year (August 2014 to January 2015).
57. Changes to the next release will be pre-announced on the website at least a month prior to coming into effect, at: <https://www.gov.uk/government/publications/learner-participation-outcomes-and-level-of-highest-qualification-held>

SUPPORTING DATA

Scope

58. Should we need to make an unplanned revision to the statistics contained in this release, we will follow the procedures outlined in the Revisions Policy for this Statistical First Release. This includes action to understand the impact that any revisions will have, as well as ensuring that they are clearly communicated to the reader. The Revisions Policy can be found at:
<https://www.gov.uk/government/publications/sfr-compliance-with-official-statistics-code-of-practice>
59. Information from the different further education learning options have been drawn together to give a coherent and comprehensive picture of the participation and achievement of young people and adults. These options include:
- Further education organisations
 - Sixth form colleges
 - Local Authorities
 - Independent training organisations.
60. These organisations deliver a wide variety of government programmes, including:
- Education and Training
 - Apprenticeships
 - Workplace Learning
 - Community Learning
 - Traineeships.
61. This SFR covers adults (19+) and does not contain information regarding:
- **Delivery in School Sixth Forms**, including maintained, independent and academy schools. Provisional figures taken from the Department for Education (DfE) [Participation in Education, Training and Employment by 16–18 Year Olds in England](#) Statistical Release show there were 541,000 16-18 year old students studying in School Sixth Forms in 2013, based on a snapshot of January 2013 school census data.
 - **Higher Education in Higher Education Institutions**. The publication referenced in paragraph 83 shows that the total number of HE enrolments at English Higher Education Institutions stood at 2,299,355 in 2013/14.
 - **Privately-funded training at FE organisations and independent training organisations**. There is no single coherent source that provides a measure of privately-funded training. However, in Table 15 of this release we do show the total number of Vocational Qualifications awarded in the UK. This includes both public and privately-funded qualifications and gives some sense of scale of total vocationally-related activity in the sector.

Data Sources

62. The data used to produce this SFR are Individualised Learner Record (ILR) collections that are returned to the Skills Funding Agency by further education colleges and providers and Employer Ownership Pilot data returned by employers.

A Single ILR collection (SILR) was introduced in 2011/12 to replace the multiple ILR collection types that were collected in previous years. There are no longer separate collections for different funding streams and providers return all of their learners in a single file. The following ILR collections have been used to update this release:

Year	Data Source
2013/14	SILR (R14), Employer Ownership Pilots 1 & 2 (R14) Large Employer Outcome Pilot (R14)
2014/15	SILR (R04) Employer Ownership Pilots 1 & 2 (R04) Large Employer Outcome Pilot (R04)

63. The data sources for all years are final collections and include information on provision for the full academic year. More information on these data sources is available in a definitions document, which can be found at: <https://www.gov.uk/government/publications/learner-participation-outcomes-and-level-of-highest-qualification-held>.

64. Ofqual Vocational Qualification data is used in Table 15 of this release.

65. The Labour Force Survey is the other data source used for the SFR (Tables 13 and 14). The latest LFS data used in this release relate to Quarter 4 (October – December) 2013. Data on the highest level of qualification was revised following a reweighting of the Labour Force Survey (LFS) which affects figures from 2001 onwards.

Issues with Using Provisional Data

66. It is important to provide the earliest picture of further education performance once it becomes available so that users may assess the impact of government-funded provision and hold the system to account. However, provisional data are taken from an operational information system which is designed to support the funding of providers and there are some important limitations users should take into consideration.

67. In-year information is subject to data lag, which is when a provider submits information after the period it related to. This information is subsequently attributed to the correct time period. Data remain provisional until final returns for the academic year are made by providers, after the end of the academic year. Final data are published in the following November. The size of revision to individual estimates that arise from data lag can vary greatly. They tend to be around 2 to 3 per cent but have been as much as 20 per cent. Revisions are typically upward though it should be noted that on occasions small downward revisions are possible.

68. Data lag from one year to the next is not predictable, as provider behaviour changes over time and there is no source of information that would enable us to provide a robust estimate of completeness of data that have been returned. Provisional data cannot, therefore, be compared with provisional or final data from earlier academic years. We generally recommend using final data for the last complete academic year.

69. We carry out a quality assessment of the volume of providers that have made their returns. If we consider estimates to be particularly weak, due to data lag or any other factor, we may defer publication of those estimates. In recent years we have encouraged more timely reporting of data ahead of the final return. This is set out in our quality statement, which can be found at: <https://www.gov.uk/government/publications/sfr-compliance-with-official-statistics-code-of-practice>.

Issues with Comparing Data Across Academic Years

70. In the 2011/12 academic year a Single Individualised Learner Record (ILR) data collection system was introduced. This replaced the multiple separate data collections from previous years and led to small technical changes in the way learners from more than one funding stream are counted.

71. Overall the new collection system led to a removal of duplicate learners and a reduction in total learner participation of approximately 2 per cent. However Apprenticeship participation figures were more significantly affected due to a change in the way learners participating on more than one Apprenticeship programme were counted. This has led to a removal of duplicate learners and a reduction in overall Apprenticeship learners of approximately 5 per cent, therefore figures for 2011/12 onwards are not comparable to earlier years. A paper is available on our website to explain the Single ILR and the small effects it has on the SFR at: [Reduction of Duplication in FE and Skills Learner Volumes](#). Further information on the Single ILR is available the GOV.UK website at: <https://www.gov.uk/government/publications/ilr-specification-validation-rules-and-appendices-2013-to-2014>

Data Definitions

72. High-level definitions of some of the key terms used in this release can be found in the Glossary on page 3. A more detailed definitions document to accompany this release is available at: [Statistical First Release Definitions](#)

73. The 'Level of Highest Qualification Held by Adults' statistics are produced using data on the highest qualification held by individuals from the Labour Force Survey in each year. The LFS is conducted by the Office for National Statistics and the estimates provided are the best measure of attainment within the population at Quarter 4 (October – December) each calendar year. Further details of how this information is used to calculate the estimates can be found at: [Statistics - Statistical First Release - SFR Methodology](#)

Publication Cycle Across the Year

74. Further information on future editions of the SFR can be found on the website at: <https://www.gov.uk/government/statistics/learner-participation-outcomes-and-level-of-highest-qualification-held>

75. Table A below shows provisional and final data included for each release.

Table A: Publication Cycle

Release	Data Included
January 2015	- Education and Training; Apprenticeship; and Workplace Learning success rates for 2013/14
	- Provisional FE and Skills data for the first quarter of 2014/15
March 2015	- Provisional FE and Skills data for the first two quarters of 2014/15
	- Final data for 2013 and provisional data for 2014 on the level of highest qualification held for adults in the population
June 2015	- Provisional FE and Skills data for the first three quarters of 2014/15
October 2015	- Provisional FE and Skills data for the full 2014/15 academic year
November 2015	- Final FE and Skills data for the full 2014/15 academic year
January 2016	- Education and Training; Apprenticeship; and Workplace Learning success rates for 2014/15
	- Provisional FE and Skills data for the first quarter of 2015/16

76. The Statistical First Release is an evolving product and we welcome feedback. If you have comments or feedback on the SFR, these can be sent to: servicedesk@sfa.bis.gov.uk, or alternatively, you can call 0370 267 0001.

77. If you have a statistical question around the content or presentation of National Statistics in the release, please contact Paula Maratos at: paula.maratos@bis.gsi.gov.uk

Supplementary Tables

78. A full list of supplementary tables relating to this SFR can be found on the GOV.UK website at <https://www.gov.uk/government/collections/fe-data-library>. These tables include breakdowns by age, gender, ethnicity, learners with learning difficulties and/or disabilities, region, local authority, parliamentary constituency, sector subject area and funding stream. For more information on exactly what data will be released, please see the supplementary tables list on the website.

79. Local Authority Reports are published on the GOV.UK website. Local Authority Districts are shown based on the postcodes of delivery locations and also on the home postcodes of learners. The reports cover 2010/11, 2011/12 and 2012/13: enrolments, participation and provider level. The reports can be found at: <https://www.gov.uk/government/statistical-data-sets/fe-data-library-local-authority-tables>

Related National Statistics Releases

80. There are a number of other National Statistics publications available that can be used to provide contextual information to this SFR. Some of those most relevant to this release are discussed below.
81. [Participation in Education, Training and Employment by 16-18 Year Olds in England](#) published on 25th June 2014 by the Department for Education. This shows that the **provisional** proportion of 16–18 year olds in education and training was 85.6 per cent at end 2013 – the highest rate ever recorded and an increase of 2 percentage points from end 2012.
82. [Level 2 and 3 Attainment by Young People in England Measured Using Matched Administrative Data: Attainment by Age 19 in 2013](#) published on 27th March 2014 by the Department for Education. This shows that in 2013, 86.2 per cent of people aged 19 were qualified to at least Level 2, and 59.1 per cent were qualified to Level 3. These were both increases of 1.1 percentage points since 2012.
83. [Higher Education Student Enrolments and Qualifications Obtained at Higher Education Institutions in the United Kingdom for the Academic Year](#) published on 15th January 2015 by the Higher Education Statistics Agency. This shows the total number of HE enrolments at UK Higher Education Institutions stood at 2,299,355 in 2013/14, a decrease of 2% from 2012/13. In 2013/14, there were 777,800 HE qualifications obtained in the UK. Of these, 421,850 were at first degree level.
84. [Education and Training Statistics for the United Kingdom](#) published on 6th November 2014 by the Department for Education. This release provides statistics relating to education and training in the UK and includes chapters relating to post-compulsory education & training and qualifications. Information includes participation of learners in further education by country of study, participation in job-related training and the highest level of qualification held by adults in the population (UK).

Other Related Statistics

85. FE Choices provides clear, comparable information to learners and employers so they can make informed choices about post-16 education and training. FE Choices enables users to search and compare provider ratings for four performance indicators: Success Rates; Learner Destinations (including Employment Rate and Learning Rate); Learner Satisfaction; and Employer Satisfaction. These indicators are published on the FE Choices website at: <http://fechoices.skillsfundingagency.bis.gov.uk/>. Results at National level, by type of provider and by individual provider for each performance indicator can be found at: <https://www.gov.uk/government/statistical-data-sets/fe-choices-performance-indicators>

Further Education Statistics for Other Countries in the UK

86. The focus of this SFR is on government-funded further education provision in England. Similar information is available for other countries in the UK, and provides useful contextual background to these statistics.
87. Statistics on Further Education and Work-based learning in **Wales** can be found at: <http://wales.gov.uk/statistics-and-research/further-education-work-based-learning-community-learning-statistics/?lang=en>
88. Statistics on Accredited Enrolments in the **Northern Ireland** Further Education Sector for 2013/14 can be found at: <http://www.delni.gov.uk/index/statsandresearch/further-education-stats/fe-enrolments/fe-activity-in-fe-colleges-ni.htm>
89. Statistics on learners in further education in **Scotland** can be found through user-defined tables on further education learners and courses: <https://stats.sfc.ac.uk/infact/>

Table Guide

90. This section provides a brief summary of what is included in each table of this release. Tables 1 to 15 focus on the 2013/14 academic year; Tables 16 to 26 show provisional data for the first quarter of the 2014/15 academic year (August 2014 to October 2014).

- **Table 1:** Adult (19+) FE and Skills Participation/Achievement by Level
- **Table 2:** Adult (19+) Demographic Summary of FE and Skills Participation
- **Table 3:** Adult (19+) FE and Skills – English and Maths Participation and Achievement by Level
- **Table 4:** All Age Demographic Summary of Apprenticeship Participation
- **Table 5:** All Age Apprenticeship Participation by Level and Age
- **Table 6:** All Age Apprenticeship Programme Starts/Achievements by Level and Age
- **Table 7:** Adult (18+) FE and Skills - Offender Learning Participation by Level
- **Table 8:** Workplace Learning Starts by Level
- **Table 9:** Community Learning Participation and Achievement by Type
- **Table 10:** 24+ FE and Skills – Participation with 24+ Advanced Learning Loans (Level 3+)
- **Table 11:** Traineeship Starts by Age
- **Table 12:** Success Rates for Education and Training, Apprenticeships and Workplace Learning
- **Table 13:** Level of Highest Qualification Held by People aged 19-59/64 in England
- **Table 14:** Level Of Highest Qualification Held By Economically Active Adults In England
- **Table 15:** Vocational Qualification Achievements in the UK by Qualification Type
- **Tables 16 to 20:** repeat earlier tables; showing provisional data for the first quarter of the 2014/15 academic year (August 2014 to October 2014).
- **Table 21.1:** Starts on the Apprenticeship Grant for Employers Scheme (AGE 16 to 24) - Pipeline Starts and Payments Made (February 2012 to October 2014)
- **Table 21.2:** Starts on the Access to Apprenticeship Pathway (2011/12 to 2013/14)
- **Tables 22 to 23:** repeat earlier tables; showing provisional data for the first quarter of the 2014/15 academic year (August 2014 to October 2014).
- **Table 24:** Employer Ownership Pilot starts by type and age on the programme.
- **Tables 25 to 26:** repeat earlier tables; showing provisional data for the first quarter of the 2014/15 academic year (August 2014 to October 2014).

Table Footnotes

General Footnotes Relevant to All Tables

- 1) Volumes are rounded to the nearest 100; percentages are calculated on pre-rounded data.
- 2) ‘-’ Indicates a base value of less than 50; ‘*’ indicates a percentage of less than 0.5%.
- 3) Tables 1-5, 7, 9 & 10 are based on learners that were funded by the Learning and Skills Council or Young People's Learning Agency and/or are now funded by the Skills Funding Agency or Education Funding Agency.
- 4) For definitions of variables used in the Tables please see the data dictionary:
<http://webarchive.nationalarchives.gov.uk/20140107201041/http://www.thedataservice.org.uk/datadictionary/>
- 5) Except for Tables 6, 21.1, 21.2 & 24 (see footnotes 15 & 30), age is reported as at 31 August of the academic year for all provision.
- 6) In tables reporting full-year numbers, except for tables 6 & 8 (see footnotes 16, 17, 24 & 25), full-year numbers are a count of the number of learners that participated/achieved at any point during the year. Learners undertaking/achieving more than one course will appear only once in the 'total learners' category for each data collection. All learners undertaking/achieving a full Level 2 or full Level 3 qualification will also appear in the Level 2 or Level 3 category, respectively.
- 7) The data source for all tables is the Individualised Learner Record, except where stated.
- 8) Further breakdowns of the data are available at the following website:
<https://www.gov.uk/government/collections/fe-data-library>

Tables 2 and 4 – Demographics

- 9) Learners undertaking courses at more than one level will be counted once for each applicable level, but once only in the Total.
- 10) Age, gender, learners with learning difficulties and/or disabilities and ethnicity are based upon self-declaration by the learner.

Tables 4-6, 12.2 & 19-20 – Apprenticeships

- 11) Apprenticeship starts and achievements include all funded and unfunded learners reported on the ILR.
- 12) Apprenticeship success rates are based on the number of learners who meet all of the requirements of their Apprenticeship framework, divided by the number of learners who have left training or successfully completed their training in the academic year.
- 13) Table 12.2 reports on success rates which are based on the reported achievement of frameworks that were expected to complete in the academic year.
- 14) Apprenticeship success rates are not affected by demand led funding.
- 15) For Apprenticeship starts and achievements, age is calculated based on age at start of the programme rather than based on 31 August.
- 16) In Table 6.1 full-year numbers are a count of the number of starts at any point during the year. Learners starting more than one Apprenticeship will appear more than once.
- 17) In Table 6.2 full-year numbers are a count of the number of framework achievements at any point during the year. Learners achieving more than one framework will appear more than once.
- 18) Programme-Led Apprenticeships recorded in ILR returns are included in the above figures.
- 19) In order to be counted as a successful achievement, all elements of the framework must have been achieved.
- 20) Quarter 1 is 1 August to 31 October; Quarter 2 is 1 November to 31 January; Quarter 3 is 1 February to 30 April; Quarter 4 is 1 May to 31 July.

Tables 8,12.3 & 22 – Workplace Learning

- 21) Workplace Learning success rates are based on the number of aims achieved, divided by the number of aims completed in the academic year.
- 22) Table 12.3 reports on success rates which are based on the reported achievement of individual aims that were expected to complete in the academic year.
- 23) 2011/12 is the first year that Workplace Learning success rates are available. This is due to a change in the programmes included in Workplace Learning. Between 2007/08 and 2010/11 this included the Train to Gain programme. In 2011/12 this included all training mainly delivered through the workplace (excluding Apprenticeships). Therefore previous years are not comparable. For more information see:
http://webarchive.nationalarchives.gov.uk/20140107201041/http://www.thedataservice.org.uk/Statistics/success_rates/success_rates_2011-12/
- 24) In Table 8.1 full-year numbers are a count of the number of starts at any point during the year. Learners starting more than one course will appear more than once.
- 25) In Table 8.2 full-year numbers are a count of the number of achievements at any point during the year. Learners achieving more than one course will appear more than once.

26) Quarter 1 is 1 August to 31 October; Quarter 2 is 1 November to 31 January; Quarter 3 is 1 February to 30 April; Quarter 4 is 1 May to 31 July.

Tables 9 & 23 – Community Learning

27) For 2009/10 to 2010/11, only Community Learning provision recorded in the Community Learning collection is included in totals except for 2009/10 where Community Learning provision recorded in the Education and Training collection for five Specially Designated Colleges is also included.

28) There are a number of learners with Community Learning aims that are recorded in the Education and Training funding stream and are not included in the figures in Table 9. In 2009/10 there were 7,700 participating and 6,300 achieving learners and in 2010/11 there were 8,300 participating and 6,900 achieving learners. The only Community Learning provision included for Table 9 for 2010/11 is recorded in the Community Learning funding stream. Community Learning in 2011/12 onwards is recorded in the Single ILR collection only.

Table 24 – Employer Ownership Pilot

29) This table covers all Employer Ownership Pilot starts.

30) Age is calculated based on age at start of the programme rather than based on 31 August.

Tables 10 & 25 – 24+ Advanced Learning Loans (Level 3+)

31) Learners have been eligible to apply for a 24+ Advanced Learning Loan since the start of the 2013/14 academic year (August 2013).

32) A small number of learners aged 23 at the start of the academic year but aged 24 at the start of the aim are included in the figures.

33) This table includes 'Education and Training' learners only. Apprenticeships were removed from the scope of the loans programme in March 2014, Apprentices who already received a loan no longer need to repay it.

Table 12.1 – Education and Training Success Rates

34) Education and Training success rates are calculated as the number of learning aims achieved divided by the number of learning aims expected to complete, excluding any learners who transferred on to another learning aim within the same institution.

35) Table 1.2 reports on the actual number of achievements within the academic year without reference to those that were expected to complete. Table 12.1 reports on success rates which are based on the reported achievement of individual aims that were expected to complete in the academic year.

Table 15 – Vocational Qualifications

36) This table covers all levels of vocational qualifications reported through Ofqual. Data are supplied by awarding organisations.

37) Academic year is October to September. For example, the 2006/07 academic year is 1 October 2006 to 30 September 2007.

38) Key Skills data was not collected prior to October 2009.

39) 'Other Vocational Qualifications' include Basic Skills, Entry Level, English for Speakers Other Languages, Functional Skills, Free-Standing Mathematics Qualification, Key Skills, National Qualifications Framework and Other General types.

Table 1.1: Adult (19+) FE and Skills Participation by Level (2009/10 to 2013/14) – Learner Volumes

		Funded Learners									
		2009/10		2010/11		2011/12		2012/13		2013/14	
				% change 09/10 to 10/11		% change 10/11 to 11/12		% change 11/12 to 12/13		% change 12/13 to 13/14	
Level		Full Year	Full Year		Full Year		Full Year		Full Year		
Total Learners		3,540,500	3,163,200	-10.7%	3,149,700	*	3,280,600	4.2%	2,929,600	-10.7%	
Participation	of which...										
	Below Level 2 (excluding English and maths)	435,300	370,900	-14.8%	574,700	54.9%	757,800	31.9%	759,900	*	
	English and maths	909,100	961,800	5.8%	1,083,000	12.6%	1,049,600	-3.1%	951,800	-9.3%	
	Full Level 2	971,000	982,600	1.2%	1,028,100	4.6%	972,500	-5.4%	863,300	-11.2%	
	Full Level 3	469,100	494,000	5.3%	486,800	-1.5%	495,300	1.7%	439,300	-11.3%	
	Level 2	1,451,200	1,273,300	-12.3%	1,320,000	3.7%	1,239,200	-6.1%	1,131,100	-8.7%	
	Level 3	604,800	542,900	-10.2%	542,600	*	594,300	9.5%	488,100	-17.9%	
	Level 4+	49,500	36,600	-26.0%	39,200	7.1%	50,000	27.6%	36,400	-27.3%	
	No Level Assigned	951,100	888,300	-6.6%	798,900	-10.1%	818,500	2.5%	660,400	-19.3%	

Table 1.2: Adult (19+) FE and Skills Achievement by Level (2009/10 to 2013/14) – Learner Volumes

		Funded Learners									
		2009/10		2010/11		2011/12		2012/13		2013/14	
				% change 09/10 to 10/11		% change 10/11 to 11/12		% change 11/12 to 12/13		% change 12/13 to 13/14	
Level		Full Year	Full Year		Full Year		Full Year		Full Year		
Total Learners		2,567,700	2,265,100	-11.8%	2,258,500	*	2,453,900	8.7%	2,265,000	-7.7%	
Achievement	of which...										
	Below Level 2 (excluding English and maths)	336,800	298,500	-11.4%	472,300	58.2%	651,900	38.0%	672,300	3.1%	
	English and maths	614,600	595,600	-3.1%	633,000	6.3%	597,300	-5.6%	567,800	-4.9%	
	Full Level 2	556,000	561,800	1.0%	546,600	-2.7%	557,800	2.0%	494,100	-11.4%	
	Full Level 3	237,800	242,700	2.1%	216,200	-10.9%	201,700	-6.7%	191,500	-5.0%	
	Level 2	926,000	788,900	-14.8%	775,200	-1.7%	769,900	-0.7%	712,700	-7.4%	
	Level 3	344,400	282,600	-17.9%	249,000	-11.9%	273,300	9.8%	230,000	-15.8%	
	Level 4+	26,900	20,400	-24.4%	21,500	5.7%	24,200	12.6%	12,900	-46.9%	
	No Level Assigned	814,600	764,100	-6.2%	685,900	-10.2%	710,100	3.5%	582,900	-17.9%	

Notes

1) These tables include Apprenticeships, Workplace Learning, Community Learning and Education and Training provision (including the Offenders' Learning and Skills Service) taken at General Further Education Colleges (including Tertiary), Sixth Form Colleges, Special Colleges (Agricultural and Horticultural Colleges and Art and Design Colleges), Specialist Colleges and External Institutions.

2) Figures for 2011/12 onwards are not directly comparable to earlier years as a Single Individualised Learner Record (ILR) data collection system has been introduced. Small technical changes have been made in the way learners from more than one provision type are counted, leading to a removal of duplicate learners and a reduction in overall learner numbers of approximately 2 per cent. More information on the Single ILR is available at http://webarchive.nationalarchives.gov.uk/20140107201041/http://www.thedataservice.org.uk/NR/rdonlyres/C05DCDD5-67EE-4AD0-88B9-BEBC8F7F3300/0/SILR_Effects_SFR_Learners_June12.pdf

3) Data for earlier years are available in the Further Education and Skills Supplementary Tables:

<https://www.gov.uk/government/statistical-data-sets/fe-data-library-further-education-and-skills>

4) In 2013/14 590,200 learners benefited from support for the unemployed (those nearest the workforce), of which 581,900 were aged 19+. These are defined as those learners reporting that they were in receipt of Employment and Support Allowance - Work Related Activity Group (ESA WRAG), Jobseeker's Allowance (JSA) or Universal Credit (if unemployed and looking for work).

5) Figures for English and maths (previously Skills for Life) include GCSEs, Functional Skills, Adult Basic Skills Certificates including ESOL Certificates, and Qualifications and Credit Framework Certificates and Awards in English and maths.

6) Please see the general footnotes and the FE and Skills footnotes sections for further information on these tables.

Table 2: Adult (19+) Demographic Summary of FE and Skills Participation (2013/14) – Learner Volumes

	Funded Learners									
	Below Level 2 (excluding English and Maths)	English and Maths of which	All FE and Skills Participation			Level 2	Level 3	Level 4+	Total FE and Skills	%
			English	Maths	ESOL					
Total Learners	759,900	951,800	707,500	667,900	139,200	1,131,100	488,100	36,400	2,929,600	100.0%
Age										
19-24	170,500	292,700	231,500	228,800	19,000	358,800	224,500	10,300	748,400	25.5%
25-49	431,000	558,400	402,000	372,800	103,700	620,000	226,200	21,700	1,589,200	54.2%
50+	158,300	100,700	74,000	66,200	16,500	152,300	37,300	4,300	588,400	20.1%
Unknown	100	-	-	-	-	-	-	-	3,700	*
Gender										
Female	336,200	557,600	403,100	388,200	92,600	596,100	292,500	22,100	1,656,900	56.6%
Male	423,700	394,200	304,400	279,600	46,600	535,000	195,500	14,300	1,272,600	43.4%
Learners with Learning Difficulties and/or Disabilities										
Learning Difficulty/Disability	173,400	127,800	96,700	88,700	9,800	134,900	47,600	2,500	438,400	15.0%
No Learning Difficulty/Disability	549,400	792,300	591,700	562,800	120,600	957,300	425,200	31,400	2,341,700	79.9%
Not Known	37,000	31,800	19,100	16,400	8,900	38,900	15,200	2,400	149,600	5.1%
Ethnicity										
Asian/ Asian British	66,500	99,100	56,800	47,200	36,700	76,100	25,500	1,800	233,700	8.0%
Black/ African/ Caribbean/ Black British	66,800	78,100	51,100	47,400	19,000	74,800	26,900	1,500	194,700	6.6%
Mixed/ Multiple Ethnic Group	23,300	25,200	17,400	16,400	5,000	28,400	11,700	600	71,300	2.4%
White	560,800	700,500	555,600	535,700	58,100	915,300	411,700	31,100	2,294,900	78.3%
Other Ethnic Group	19,500	31,100	14,700	10,900	16,400	17,100	4,900	400	62,200	2.1%
Not Known/Not Provided	23,100	17,800	11,900	10,200	4,000	19,400	7,300	1,000	72,800	2.5%

Notes

1) These tables include Apprenticeships, Workplace Learning, Community Learning and Education and Training provision (including the Offenders' Learning and Skills Service) taken at General Further Education Colleges (including Tertiary), Sixth Form Colleges, Special Colleges (Agricultural and Horticultural Colleges and Art and Design Colleges), Specialist Colleges and External Institutions.

2) Figures for English and maths (previously Skills for Life) include GCSEs, Functional Skills, Adult Basic Skills Certificates including ESOL Certificates, and Qualifications and Credit Framework Certificates and Awards in English and maths.

3) Figures include 120 learners with an unknown gender.

4) Please see the general footnotes and the FE and Skills Demographics footnotes sections for further information on these tables.

Table 3: Adult (19+) FE and Skills – English and Maths Participation and Achievement by Level (2009/10 to 2013/14)

Measure	Level	Funded Learners								
		2009/10	2010/11	2011/12		2012/13		2013/14		
		Full Year	Full Year	% change 09/10 to 10/11	% change 10/11 to 11/12	Full Year	% change 11/12 to 12/13	Full Year	% change 12/13 to 13/14	
Participation	Total Learners	909,100	961,800	5.8%	1,083,000	12.6%	1,049,600	-3.1%	951,800	-9.3%
	of which English	555,700	639,000	15.0%	782,500	22.5%	765,800	-2.1%	707,500	-7.6%
	of which entry level	112,400	103,800	-7.7%	107,600	3.6%	120,200	11.7%	109,000	-9.3%
	of which level 1	226,700	285,900	26.1%	379,500	32.7%	340,900	-10.2%	314,000	-7.9%
	of which level 2	252,100	286,800	13.8%	335,400	16.9%	327,900	-2.2%	308,600	-5.9%
	of which maths	525,000	630,500	20.1%	772,500	22.5%	748,200	-3.1%	667,900	-10.7%
	of which entry level	101,400	98,500	-2.9%	102,400	3.9%	95,500	-6.7%	79,100	-17.1%
	of which level 1	236,800	314,800	32.9%	396,500	26.0%	346,800	-12.5%	316,800	-8.7%
	of which level 2	228,800	265,700	16.2%	323,400	21.7%	334,800	3.5%	302,500	-9.6%
	of which ESOL (English for Speakers of Other Languages)	178,600	163,600	-8.4%	139,400	-14.8%	146,200	4.9%	139,200	-4.8%
	of which entry level	150,100	135,500	-9.7%	118,000	-12.9%	123,200	4.4%	118,800	-3.6%
	of which level 1	24,100	24,200	*	19,000	-21.4%	21,700	13.8%	17,900	-17.1%
	of which level 2	9,700	9,600	-0.6%	7,100	-26.1%	7,500	6.1%	6,900	-8.0%
Achievement	Total Learners	614,600	595,600	-3.1%	633,000	6.3%	597,300	-5.6%	567,800	-4.9%
	of which English	336,400	329,700	-2.0%	387,400	17.5%	351,500	-9.3%	339,600	-3.4%
	of which entry level	79,200	74,400	-6.1%	79,700	7.2%	90,500	13.5%	82,000	-9.3%
	of which level 1	130,200	134,100	3.1%	175,600	30.9%	152,000	-13.4%	139,600	-8.2%
	of which level 2	144,700	139,900	-3.3%	152,800	9.2%	116,600	-23.7%	127,600	9.5%
	of which maths	311,100	324,300	4.2%	386,400	19.1%	357,100	-7.6%	330,600	-7.4%
	of which entry level	68,400	70,900	3.7%	79,700	12.4%	73,800	-7.5%	60,000	-18.6%
	of which level 1	138,400	151,300	9.4%	191,600	26.6%	165,200	-13.8%	151,800	-8.1%
	of which level 2	126,200	128,500	1.8%	142,400	10.8%	129,600	-9.0%	132,900	2.6%
	of which ESOL (English for Speakers of Other Languages)	128,200	122,100	-4.7%	110,000	-10.0%	117,500	6.9%	113,800	-3.2%
	of which entry level	108,100	101,700	-5.9%	93,700	-7.9%	99,100	5.7%	97,000	-2.1%
	of which level 1	15,900	16,400	3.6%	13,200	-20.0%	15,700	19.6%	14,000	-11.0%
	of which level 2	6,600	6,500	-1.7%	5,200	-19.7%	5,700	9.7%	5,500	-3.6%

Notes

1) Figures for 2011/12 onwards are not directly comparable to earlier years as a Single Individualised Learner Record (ILR) data collection system has been introduced. More information on the Single ILR is available at http://webarchive.nationalarchives.gov.uk/20140107201041/http://www.thedataservice.org.uk/NR/rdonlyres/C05DCDD5-67EE-4AD0-88B9-BEBC8F7F3300/0/SILR_Effects_SFR_Learners_June12.pdf

2) Data for earlier years are available in the English and maths Supplementary Tables:

<https://www.gov.uk/government/statistical-data-sets/fe-data-library-skills-for-life>

3) Figures for English and maths (previously Skills for Life) include GCSEs, Functional Skills, Adult Basic Skills Certificates including ESOL Certificates, and Qualifications and Credit Framework Certificates and Awards in English and maths.

4) Please see the general footnotes section for further information on this table.

Table 4: All Age Demographic Summary of Apprenticeship Participation (2013/14) – Learner Volumes

	Funded Apprentices					
	Apprenticeships					
	Intermediate Level Apprenticeship	Advanced Level Apprenticeship	Higher Apprenticeship	Total Apprenticeships		%
Total Learners	503,500	351,900	18,100	851,500		100.0%
Age						
Under 19	134,500	58,100	1,000	185,800		21.8%
19-24	176,800	137,300	5,700	308,900		36.3%
25-49	160,700	136,400	9,700	303,900		35.7%
50+	31,600	20,000	1,700	53,000		6.2%
Unknown	-	-	-	-		-
Gender						
Female	250,600	192,000	11,700	442,300		51.9%
Male	252,900	159,900	6,400	409,300		48.1%
Learners with Learning Difficulties and/or Disabilities						
Learning Difficulty/Disability	45,900	25,600	900	70,700		8.3%
No Learning Difficulty/Disability	449,600	320,600	16,800	767,100		90.1%
Not Known	7,900	5,700	300	13,800		1.6%
Ethnicity						
Asian/ Asian British	21,200	12,600	800	34,000		4.0%
Black/ African/ Caribbean/ Black British	15,800	11,300	600	27,400		3.2%
Mixed/ Multiple Ethnic Group	10,300	6,800	300	17,000		2.0%
White	447,300	315,600	16,000	758,400		89.1%
Other Ethnic Group	3,600	1,900	100	5,500		0.7%
Not Known/Not Provided	5,300	3,700	300	9,100		1.1%

Notes

1) Figures for 2013/14 include 10 learners with an unknown gender.

2) 24+ Advanced Learning Loans were introduced in August 2013. Data show that the number of Apprenticeship starts for those aged 24 and above studying at Level 3 and above has been directly affected. There is also some anecdotal evidence that the numbers of starts for other ages may have been indirectly affected. The Skills Funding Statement in February 2014 announced that regulations have been laid to remove Apprenticeships from loan funding and make them eligible for funding via the Adult Skills Budget.

3) Please see the general footnotes and the Demographics footnotes sections for further information on this table.

Table 5: All Age Apprenticeship Participation by Level and Age (2009/10 to 2013/14)

Age		Funded Apprentices												
		2009/10	2010/11	2011/12	2012/13	2013/14	2012/13				2013/14			
		Full Year	Full Year	Full Year	Full Year	Full Year	August to October	August to January	August to April	Full Year August to July	August to October	August to January	August to April	Full Year August to July
Intermediate Level Apprenticeship	Under 19	140,400	150,000	144,200	132,600	134,500	84,100	99,700	114,500	132,600	84,500	101,000	116,400	134,500
	19-24	114,600	141,300	159,100	167,200	176,800	111,400	130,100	149,100	167,200	121,700	140,700	159,300	176,800
	25+	49,000	123,900	203,000	201,900	192,300	130,500	151,800	173,700	201,900	122,300	143,000	166,500	192,300
	Total	304,000	415,200	506,200	501,700	503,500	326,000	381,600	437,300	501,700	328,600	384,800	442,200	503,500
	of which 19+	163,600	265,300	362,100	369,100	369,000	242,000	281,900	322,800	369,100	244,000	283,800	325,800	369,000
Advanced Level Apprenticeship	Under 19	45,800	52,900	53,300	54,800	58,100	36,000	41,600	47,200	54,800	37,600	44,200	50,000	58,100
	19-24	94,900	108,100	118,900	132,500	137,300	95,000	105,700	117,500	132,500	104,500	115,000	125,800	137,300
	25+	44,800	86,100	144,800	189,700	156,500	114,500	131,800	150,900	189,700	119,300	121,900	136,400	156,500
	Total	185,500	247,200	317,000	377,000	351,900	245,500	279,000	315,500	377,000	261,400	281,100	312,200	351,900
	of which 19+	139,700	194,300	263,700	322,200	293,800	209,500	237,400	268,300	322,200	223,800	236,900	262,200	293,800
Higher Apprenticeship	Under 19	200	300	500	800	1,000	400	500	600	800	600	700	800	1,000
	19-24	1,400	2,400	2,900	4,200	5,700	2,800	3,200	3,600	4,200	4,300	4,700	5,100	5,700
	25+	100	800	2,300	8,000	11,500	2,500	3,300	4,900	8,000	6,900	7,000	8,200	11,500
	Total	1,700	3,500	5,700	13,000	18,100	5,700	7,000	9,200	13,000	11,800	12,500	14,100	18,100
	of which 19+	1,500	3,200	5,200	12,200	17,100	5,300	6,400	8,600	12,200	11,200	11,700	13,300	17,100
All Apprenticeships	Under 19	186,400	203,100	189,600	181,300	185,800	118,700	138,600	157,400	181,300	120,400	141,800	161,400	185,800
	19-24	210,900	251,900	272,100	294,500	308,900	206,800	234,500	263,500	294,500	227,000	254,400	281,700	308,900
	25+	93,900	210,900	344,800	392,900	356,900	246,500	284,600	325,700	392,900	248,100	271,500	309,600	356,900
	Total	491,300	665,900	806,500	868,700	851,500	572,000	657,700	746,700	868,700	595,500	667,600	752,700	851,500
	of which 19+	304,800	462,800	616,900	687,400	665,700	453,300	519,100	589,300	687,400	475,100	525,900	591,300	665,700

Notes

- 1) Figures for 2011/12 onwards are not comparable to earlier years as a Single Individualised Learner Record (ILR) data collection system has been introduced. Technical changes have been made in the way learners participating on more than one Apprenticeship programme are counted. This has led to a removal of duplicate learners. More information on the Single ILR is available at: http://webarchive.nationalarchives.gov.uk/20140107201041/http://www.thedataservice.org.uk/NR/rdonlyres/C05DCDD5-67EE-4AD0-88B9-BEBC8F7F3300/0/SILR_Effects_SFR_Learners_June12.pdf
- 2) Prior to 2011/12, full year numbers are a count of Apprenticeship programmes in each year. Learners undertaking more than one Apprenticeship programme will appear more than once in the 'All Apprenticeships' total as well as the totals for each Apprenticeship level they participated in. From 2011/12 onwards 'All Apprenticeships' counts each Apprenticeship learner only once regardless of how many programmes they participated in. Each learner is still counted in the totals for each Apprenticeship level they participated in.
- 3) 24+ Advanced Learning Loans were introduced in August 2013. Data show that the number of Apprenticeship starts for those aged 24 and above studying at Level 3 and above has been directly affected. There is also some anecdotal evidence that the numbers of starts for other ages may have been indirectly affected. The Skills Funding Statement in February 2014 announced that regulations have been laid to remove Apprenticeships from loan funding and make them eligible for funding via the Adult Skills Budget.
- 4) Data for earlier years are available in the Apprenticeship Supplementary Tables: <https://www.gov.uk/government/statistical-data-sets/fe-data-library-apprenticeships>.
- 5) Figures for 2012/13 onwards include Apprenticeships through the Employer Ownership Pilot.
- 6) Please see the general footnotes and the Apprenticeships footnotes section for further information on this table.

Table 6.1: All Age Apprenticeship Programme Starts by Level and Age (2009/10 to 2013/14)

Age	2009/10 Full Year	2010/11 Full Year	2011/12 Full Year	2012/13 Full Year	2013/14 Full Year	2012/13				2013/14				
						Quarter 1	Quarter 2	Quarter 3	Quarter 4	Quarter 1	Quarter 2	Quarter 3	Quarter 4	
Intermediate Level Apprenticeship														
Under 19	89,400	97,300	95,400	80,900	83,400	35,500	15,600	14,000	15,900	35,800	16,800	14,600	16,200	
19-24	72,800	90,400	101,700	99,000	97,000	30,100	22,000	24,000	22,800	27,500	23,000	23,800	22,700	
25+	28,400	113,400	131,900	112,900	106,100	30,000	24,100	26,100	32,600	22,900	24,200	28,500	30,500	
Total	190,500	301,100	329,000	292,800	286,500	95,700	61,600	64,100	71,300	86,200	63,900	66,900	69,400	
of which 19+	101,100	203,800	233,600	211,900	203,100	60,200	46,100	50,200	55,500	50,400	47,100	52,300	53,200	
Advanced Level Apprenticeship														
Under 19	27,200	34,200	34,100	33,100	35,600	17,600	5,100	4,600	5,800	18,200	6,100	5,000	6,400	
19-24	39,800	51,600	58,000	63,900	59,300	21,700	11,900	13,800	16,500	19,500	12,500	13,300	14,000	
25+	20,600	68,000	95,700	110,600	49,800	24,400	19,600	22,400	44,300	4,200	3,900	17,800	24,000	
Total	87,700	153,900	187,900	207,700	144,700	63,700	36,700	40,800	66,500	41,900	22,500	36,000	44,400	
of which 19+	60,400	119,700	153,700	174,600	109,100	46,000	31,500	36,200	60,800	23,700	16,400	31,000	38,000	
Higher Apprenticeship														
Under 19	100	200	300	600	700	300	100	100	100	500	100	-	100	
19-24	1,200	1,300	1,700	2,400	2,900	1,000	400	500	600	1,400	500	400	600	
25+	100	700	1,700	6,800	5,600	800	900	1,800	3,300	300	200	1,500	3,600	
Total	1,500	2,200	3,700	9,800	9,200	2,100	1,400	2,400	4,000	2,100	800	1,900	4,300	
of which 19+	1,400	2,000	3,400	9,200	8,500	1,700	1,300	2,300	3,900	1,600	700	1,900	4,300	
All Apprenticeships														
Under 19	116,800	131,700	129,900	114,500	119,800	53,400	20,800	18,600	21,700	54,500	23,000	19,600	22,700	
19-24	113,800	143,400	161,400	165,400	159,100	52,800	34,300	38,300	39,900	48,400	35,900	37,500	37,300	
25+	49,100	182,100	229,300	230,300	161,600	55,200	44,600	50,300	80,200	27,400	28,300	47,800	58,000	
Total	279,700	457,200	520,600	510,200	440,400	161,400	99,700	107,300	141,800	130,300	87,200	104,900	118,100	
of which 19+	162,900	325,500	390,700	395,700	320,700	108,000	78,900	88,700	120,100	75,800	64,200	85,300	95,400	

Table 6.2: All Age Apprenticeship Framework Achievements by Level and Age (2009/10 to 2013/14)

Age	2009/10 Full Year	2010/11 Full Year	2011/12 Full Year	2012/13 Full Year	2013/14 Full Year	2012/13				2013/14			
						Quarter 1	Quarter 2	Quarter 3	Quarter 4	Quarter 1	Quarter 2	Quarter 3	Quarter 4
Intermediate Level Apprenticeship													
Under 19	52,900	59,400	56,500	42,100	45,200	12,000	9,000	8,400	12,700	13,900	9,200	8,700	13,400
19-24	38,600	48,400	54,100	47,700	50,800	12,600	11,600	11,200	12,300	12,200	11,200	11,900	15,500
25+	20,300	23,900	61,800	66,500	54,900	16,600	15,400	16,200	18,300	12,900	11,700	12,800	17,500
Total	111,900	131,700	172,400	156,300	150,900	41,200	36,000	35,800	43,200	39,000	32,100	33,400	46,400
of which 19+	59,000	72,400	115,900	114,200	105,700	29,200	27,000	27,400	30,600	25,100	22,900	24,700	33,000
Advanced Level Apprenticeship													
Under 19	20,100	23,900	21,300	18,600	20,000	5,400	3,600	3,500	6,000	5,500	3,900	4,000	6,500
19-24	25,400	27,700	30,600	30,800	35,000	7,800	6,700	7,100	9,300	8,800	7,400	7,800	11,100
25+	13,900	15,900	32,800	45,700	47,200	9,500	10,400	11,100	14,700	10,400	9,800	10,800	16,200
Total	59,400	67,500	84,700	95,000	102,200	22,700	20,700	21,700	30,000	24,700	21,100	22,600	33,800
of which 19+	39,300	43,600	63,400	76,500	82,200	17,300	17,000	18,100	24,000	19,200	17,100	18,600	27,300
Higher Apprenticeship													
Under 19	-	100	100	100	200	-	-	-	-	100	-	-	-
19-24	100	800	800	800	1,100	300	200	100	200	500	200	200	300
25+	-	100	300	600	1,400	100	100	100	200	300	200	300	700
Total	200	1,000	1,200	1,600	2,700	400	400	300	500	900	400	500	1,000
of which 19+	200	900	1,200	1,400	2,500	400	300	200	500	800	400	500	900
All Apprenticeships													
Under 19	73,100	83,300	77,900	60,800	65,400	17,400	12,700	11,900	18,700	19,500	13,200	12,700	20,000
19-24	64,200	77,000	85,600	79,300	86,900	20,700	18,400	18,400	21,800	21,500	18,700	19,900	26,800
25+	34,300	39,900	94,900	112,800	103,500	26,300	25,900	27,400	33,200	23,600	21,600	23,900	34,400
Total	171,500	200,300	258,400	252,900	255,800	64,400	57,000	57,700	73,700	64,600	53,500	56,500	81,100
of which 19+	98,400	116,900	180,500	192,100	190,400	47,000	44,400	45,800	55,000	45,100	40,300	43,800	61,200

Notes

1) Figures for 2011/12 onwards are not directly comparable to earlier years as a Single Individualised Learner Record (ILR) data collection system has been introduced. More information on the Single ILR is available at http://webarchive.nationalarchives.gov.uk/20140107201041/http://www.thedataservice.org.uk/NR/rdonlyres/C05DCDD5-67EE-4AD0-88B9-BEBC8F7F3300/0/SILR_Effects_SFR_Learners_June12.pdf

2) 24+ Advanced Learning Loans were introduced in August 2013. Data show that the number of Apprenticeship starts for those aged 24 and above studying at Level 3 and above has been directly affected. There is also some anecdotal evidence that the numbers of starts for other ages may have been indirectly affected. The Skills Funding Statement in February 2014 announced that regulations have been laid to remove Apprenticeships from loan funding and make them eligible for funding via the Adult Skills Budget.

3) Data for earlier years are available in the Apprenticeship Supplementary Tables:

<https://www.gov.uk/government/statistical-data-sets/fe-data-library-apprenticeships>

4) Figures for 2012/13 onwards include Apprenticeships through the Employer Ownership Pilot.

5) Please see the general footnotes and the Apprenticeships footnotes section for further information on these tables.

Table 7.1: Adult (18+) FE and Skills - Offender Learning Participation by Level (2010/11 to 2013/14) – Learner Volumes

			Funded Learners						
			2010/11	2011/12		2012/13		2013/14	
				% change	% change		% change		
				10/11 to	11/12 to		12/13 to		
Level			Full Year	Full Year	11/12	Full Year	12/13	Full Year	13/14
Total Offender Learners			88,900	90,100	1.4%	89,900	*	95,300	6.0%
Participation	of which...								
		Below Level 2 (excluding English and maths)	56,800	59,900	5.4%	66,300	10.8%	73,900	11.5%
		English and maths	35,400	37,000	4.5%	34,400	-7.1%	37,500	9.1%
		Full Level 2	3,600	3,800	4.0%	6,900	83.2%	12,200	76.1%
		Full Level 3	100	100	23.3%	100	-25.2%	100	-37.4%
		Level 2	38,500	41,600	7.9%	40,300	-2.9%	43,500	7.8%
		Level 3	2,000	2,100	5.6%	2,400	16.6%	1,000	-57.2%
		Level 4+	-	-	-	-	-	-	-
		No Level Assigned	12,400	7,800	-37.1%	-	-	4,500	-

Table 7.2: Adult (18+) FE and Skills - Offender Learning Achievement by Level (2010/11 to 2013/14) – Learner Volumes

			Funded Learners						
			2010/11	2011/12		2012/13		2013/14	
				% change	% change		% change		
				10/11 to	11/12 to		12/13 to		
Level			Full Year	Full Year	11/12	Full Year	12/13	Full Year	13/14
Total Offender Learners			70,300	71,900	2.3%	68,400	-4.9%	79,700	16.6%
Achievement	of which...								
		Below Level 2 (excluding English and maths)	44,400	47,200	6.4%	51,500	9.0%	62,400	21.2%
		English and maths	21,700	23,400	7.6%	16,400	-29.7%	20,700	25.9%
		Full Level 2	3,200	2,300	-30.2%	4,000	77.9%	6,700	67.6%
		Full Level 3	100	100	-23.2%	-	-	-	-
		Level 2	29,100	31,800	9.2%	29,100	-8.4%	32,400	11.2%
		Level 3	1,200	1,200	7.1%	1,400	9.9%	600	-55.5%
		Level 4+	-	-	-	-	-	-	-
		No Level Assigned	10,400	6,700	-35.6%	-	-	3,300	-

Notes

1) Figures for 2011/12 onwards are not directly comparable to earlier years as a Single Individualised Learner Record (ILR) data collection system has been introduced. More information on the Single ILR is available at http://webarchive.nationalarchives.gov.uk/20140107201041/http://www.thedataservice.org.uk/NR/rdonlyres/C05DCDD5-67EE-4AD0-88B9-BEBC8F7F3300/0/SILR_Effects_SFR_Learners_June12.pdf

2) Figures for English and maths (previously Skills for Life) include GCSEs, Functional Skills, Adult Basic Skills Certificates including ESOL Certificates, and Qualifications and Credit Framework Certificates and Awards in English and maths.

3) An offender learner may be counted more than once if they participated/achieved in learning at different institutions during an academic year.

4) The large increase in No Level Assigned learners between 2012/13 and 2013/14 is due to the renewed take-up of practical skills/crafts.

5) Please see the general footnotes and the FE and Skills footnotes sections for further information on these tables.

Table 8.1: Workplace Learning Starts by Level (2009/10 to 2013/14)

Level		2009/10	2010/11	2011/12	2012/13	2013/14	2012/13				2013/14			
		Full Year	Full Year	Full Year	Full Year	Full Year	Quarter 1	Quarter 2	Quarter 3	Quarter 4	Quarter 1	Quarter 2	Quarter 3	Quarter 4
Total Starts		774,500	599,300	331,600	148,500	102,400	30,800	34,700	42,100	40,800	23,600	23,100	25,800	29,900
of which...	Below Level 2	147,100	114,300	43,200	30,900	14,300	7,600	9,300	8,100	5,900	3,700	3,600	3,600	3,400
	Level 2	430,500	331,900	252,200	102,100	71,500	20,300	22,500	29,800	29,600	16,900	16,100	18,300	20,200
	Level 3	100,200	81,800	34,200	11,100	12,300	2,700	2,100	3,100	3,200	2,300	2,600	3,000	4,400
	Level 4+	4,300	3,000	2,000	2,000	4,100	200	400	600	800	700	700	900	1,900
	No Level Assigned	92,400	68,300	-	2,400	200	-	400	600	1,400	-	100	100	100
	Below Level 2 (excluding English and maths)	27,900	11,200	4,200	2,900	4,700	400	700	900	900	1,400	800	900	1,500
	English and maths	127,000	108,300	62,200	39,400	20,400	9,800	11,300	10,300	8,000	4,900	5,600	5,600	4,300
	Full Level 2	415,100	315,400	226,300	85,200	50,100	16,900	18,800	25,100	24,400	12,500	11,800	12,600	13,200
	Full Level 3	98,200	80,600	31,700	6,000	2,200	1,700	1,200	1,500	1,600	700	500	500	500

Table 8.2: Workplace Learning Achievements by Level (2009/10 to 2013/14)

Level		2009/10	2010/11	2011/12	2012/13	2013/14	2012/13				2013/14			
		Full Year	Full Year	Full Year	Full Year	Full Year	Quarter 1	Quarter 2	Quarter 3	Quarter 4	Quarter 1	Quarter 2	Quarter 3	Quarter 4
Total Achievements		676,000	584,900	290,100	197,900	103,100	49,600	49,300	44,800	54,200	24,500	23,400	24,000	31,200
of which...	Below Level 2	105,900	95,100	34,900	27,400	13,000	5,200	6,300	7,300	8,600	3,300	2,800	2,900	3,900
	Level 2	389,700	332,500	212,100	145,100	72,600	38,300	36,500	31,600	38,700	17,000	16,600	17,000	22,000
	Level 3	95,500	81,100	41,100	22,800	13,200	5,700	6,000	5,200	5,900	3,200	3,200	3,100	3,600
	Level 4+	7,200	3,600	2,000	2,200	3,500	300	500	700	800	600	700	800	1,300
	No Level Assigned	77,600	72,600	-	400	900	-	-	100	300	300	100	200	300
	Below Level 2 (excluding English and maths)	15,900	10,900	2,700	2,800	4,100	400	500	1,000	900	1,200	700	800	1,300
	English and maths	94,900	88,500	51,700	35,700	18,200	7,800	8,400	8,500	10,900	3,900	4,400	4,700	5,200
	Full Level 2	378,900	318,700	191,700	129,900	55,900	35,100	33,400	28,500	33,000	14,300	13,200	12,400	16,100
	Full Level 3	93,700	80,200	40,200	16,100	4,800	4,400	4,300	3,600	3,800	1,600	1,200	900	1,100

Notes

1) Figures for 2011/12 onwards are not directly comparable to earlier years as a Single Individualised Learner Record (ILR) data collection system has been introduced. More information on the Single ILR is available at http://webarchive.nationalarchives.gov.uk/20140107201041/http://www.thedataservice.org.uk/NR/rdonlyres/C05DCDD5-67EE-4AD0-88B9-BEBC8F7F3300/0/SILR_Effects_SFR_Learners_June12.pdf

2) Workplace Learning includes Train to Gain and other Employer Responsive provision (except Apprenticeships).

3) Data for earlier years are available in the Workplace Learning Supplementary Tables:

<https://www.gov.uk/government/statistical-data-sets/fe-data-library-workplace-learning>

4) English and maths starts and achievements can be at Level 2 or Below Level 2.

5) These tables include some learners aged under 19 who are eligible for funding on certain Workplace Learning programmes (such as Programmes for the Unemployed).

6) Please see the general footnotes and the Workplace Learning footnotes section for further information on these tables.

Table 9: Community Learning Participation and Achievement by Type (2009/10 to 2013/14) – Learner Volumes

Measure	Provision Type	Funded Learners											
		2009/10			2010/11			2011/12		2012/13		2013/14	
		Full Year	Full Year	% change 09/10 to 10/11	Full Year	Full Year	% change 10/11 to 11/12	Full Year	Full Year	% change 11/12 to 12/13	Full Year	Full Year	% change 12/13 to 13/14
Participation	Total Learners	752,800	699,400	-7.1%	683,300	-2.3%	684,700	*	657,200	-4.0%			
	of which Personal and Community Development Learning	579,200	534,100	-7.8%	518,600	-2.9%	513,800	-0.9%	497,300	-3.2%			
	of which Neighbourhood Learning in Deprived Communities	43,700	46,600	6.5%	55,700	19.8%	65,600	17.7%	63,800	-2.7%			
	of which Family English, Maths and Language	71,300	65,400	-8.3%	58,700	-10.4%	52,600	-10.4%	49,100	-6.6%			
	of which Wider Family Learning	79,600	75,400	-5.3%	72,800	-3.4%	74,400	2.2%	69,700	-6.4%			
Achievement	Total Learners	663,000	608,200	-8.3%	594,500	-2.3%	608,100	2.3%	584,900	-3.8%			
	of which Personal and Community Development Learning	505,900	458,600	-9.3%	445,400	-2.9%	450,900	1.2%	436,600	-3.2%			
	of which Neighbourhood Learning in Deprived Communities	39,800	41,300	3.7%	50,100	21.4%	60,600	21.1%	58,700	-3.3%			
	of which Family English, Maths and Language	62,700	57,000	-9.0%	50,900	-10.8%	46,000	-9.6%	43,600	-5.2%			
	of which Wider Family Learning	72,600	70,100	-3.4%	67,500	-3.8%	69,500	2.9%	65,800	-5.2%			

Notes

1) Figures for 2011/12 onwards are not directly comparable to earlier years as a Single Individualised Learner Record (ILR) data collection system has been introduced. More information on the Single ILR is available at http://webarchive.nationalarchives.gov.uk/20140107201041/http://www.thedataservice.org.uk/NR/rdonlyres/C05DCDD5-67EE-4AD0-88B9-BEBC8F7F3300/0/SILR_Effects_SFR_Learners_June12.pdf

2) Data for earlier years is available in the Community Learning Supplementary Tables:

<https://www.gov.uk/government/statistical-data-sets/fe-data-library-community-learning>

3) Please see the general footnotes and the Community Learning footnotes sections for further information on this table.

Table 10: 24+ FE and Skills – Participation with 24+ Advanced Learning Loans (Level 3+) (2013/14) – Learner Volume:

Funded Learners		2013/14
		Full Year
Participation with 24+ Advanced Learning Loans	Total Learners	59,100
	of which Level 3	56,400
	of which Level 4+	2,700

Notes

- 1) This table includes Education and Training provision taken at General Further Education Colleges (including Tertiary), Sixth Form Colleges, Special Colleges (Agricultural and Horticultural Colleges and Art and Design Colleges), Specialist Colleges and External Institutions.
- 2) Please note that Apprenticeships were removed from loan funding from March 2014. Apprentices who previously received a loan no longer need to repay it. Apprentices that previously appeared in this table earlier in the academic year have now been removed.
- 3) Please see the general footnotes for further information on this table.

Table 11: Traineeship Starts by Age (2013/14)

Age		2013/14
		Full Year
Total Traineeships	Under 19	7,000
	19-23	3,400
Total		10,400

Notes

- 1) Age is reported as at 31st August of the academic year.
- 2) There are fewer than 50 learners who were reported as starting in 2012/13 who have been included in the figures for 2013/14.
- 3) Please see the general footnotes for further information on this table.

Table 12.1: Adult (19+) Education and Training Success Rates by Level (2009/10 to 2013/14) – Percentages

		2009/10	2010/11	2011/12	2012/13	2013/14
Level		Full Year	Full Year	Full Year	Full Year	Full Year
Education and Training Provision		80.3%	81.4%	83.9%	86.8%	87.6%
of which...						
	English and maths	74.3%	78.6%	80.1%	83.4%	80.7%
	Full Level 2	74.8%	78.5%	82.6%	85.0%	88.2%
	Full Level 3	75.1%	77.7%	78.4%	79.6%	81.2%
	Level 2	80.3%	80.2%	82.7%	85.5%	86.4%
	Level 3	78.7%	78.8%	79.4%	81.6%	82.3%

Table 12.2: Apprenticeship Success Rates by Level and Age (2009/10 to 2013/14) – Percentages

		2009/10	2010/11	2011/12	2012/13	2013/14
Level		Full Year	Full Year	Full Year	Full Year	Full Year
Intermediate Level Apprenticeship						
	Under 19	71.1%	72.2%	71.9%	69.8%	69.5%
	19-24	74.6%	76.7%	74.8%	71.6%	68.7%
	25+	77.5%	80.6%	71.4%	73.8%	68.3%
	Total	73.4%	75.3%	72.6%	72.0%	68.8%
	of which 19+	75.6%	78.0%	73.0%	72.9%	68.5%
Advanced Level Apprenticeship						
	Under 19	76.2%	79.0%	76.5%	75.9%	75.0%
	19-24	75.4%	79.7%	77.8%	74.1%	72.1%
	25+	71.5%	76.2%	75.1%	71.1%	64.9%
	Total	74.8%	78.6%	76.5%	73.0%	69.1%
	of which 19+	74.0%	78.4%	76.4%	72.3%	67.8%
Higher Apprenticeship						
	Under 19		83.2%	64.4%	77.4%	66.9%
	19-24		84.8%	74.4%	75.0%	76.1%
	25+		84.2%	70.1%	62.4%	68.5%
	Total		84.6%	72.6%	70.2%	71.3%
	of which 19+		84.8%	73.2%	69.7%	71.7%
All Apprenticeships						
	Under 19	72.4%	74.0%	73.1%	71.5%	71.1%
	19-24	74.9%	77.8%	75.9%	72.6%	70.1%
	25+	75.1%	78.8%	72.6%	72.7%	66.7%
	Total	73.8%	76.4%	73.8%	72.3%	68.9%
	of which 19+	75.0%	78.2%	74.2%	72.6%	68.2%

Table 12.3: Adult (19+) Workplace Learning Success Rates by Level (2011/12 to 2013/14) – Percentages

		2011/12	2012/13	2013/14
Level		Full Year	Full Year	Full Year
Workplace Learning		90.6%	89.1%	84.5%
of which...				
	English and maths	92.5%	90.3%	72.9%
	Full Level 2	90.9%	89.6%	89.6%
	Full Level 3	86.9%	83.3%	80.1%

Notes

1) Figures for 2011/12 onwards are not directly comparable to earlier years as a Single Individualised Learner Record (ILR) data collection system has been introduced. More information on the Single ILR is available at http://webarchive.nationalarchives.gov.uk/20140107201041/http://www.thedataservice.org.uk/NR/rdonlyres/C05DCDD5-67EE-4AD0-88B9-BEBC8F7F3300/0/SILR_Effects_SFR_Learners_June12.pdf

2) The methodology for calculating Education and Training success rates was changed in 2013/14.

3) Data for earlier years are available in the FE Data Library:

<https://www.gov.uk/government/collections/fe-data-library>

4) Figures for English and maths (previously Skills for Life) include GCSEs, Functional Skills, Adult Basic Skills Certificates including ESOL Certificates, and Qualifications and Credit Framework Certificates and Awards in English and maths.

5) Please see the general footnotes, Apprenticeship and Workplace Learning footnotes sections for further information on these tables.

Table 13.1: Level of Highest Qualification Held by People aged 19-59/64 in England (Quarter 4)¹ - percentages
(REVISED 26th November 2014³)

Year	All people aged 19-59/64 ³ (thousands)	Level 4 and above	Level 3	Level 3 and above	Level 2	Level 2 and above	Below Level 2 (incl no qualifications)
2006	29,583	33.1	20.3	53.4	18.6	72.0	28.0
2007	29,774	34.3	20.8	55.1	18.4	73.5	26.5
2008	29,954	34.7	20.7	55.4	19.0	74.4	25.6
2009	30,128	36.6	20.6	57.2	19.6	76.8	23.2
2010	30,355	37.8	20.9	58.7	19.1	77.8	22.2
2011	30,509	38.3	21.1	59.5	19.2	78.7	21.3
2012	30,580	40.1	21.5	61.6	19.0	80.6	19.4
2013	30,706	40.3 ^P	22.2 ^P	62.6 ^P	18.6 ^P	81.1 ^P	18.9 ^P
2013 95% CI (+/-)		0.4	0.3	0.4	0.3	0.3	0.3

Table 13.2: Level of Highest Qualification Held by People aged 19-59/64 in England (Quarter 4)¹ - volumes (thousands)
(REVISED 26th November 2014³)

Year	All people aged 19-59/64	Level 4 and above	Level 3	Level 3 and above	Level 2	Level 2 and above	Below Level 2 (incl no qualifications)
2006	29,583	9,783	6,014	15,797	5,500	21,296	8,286
2007	29,774	10,212	6,189	16,402	5,475	21,877	7,897
2008	29,954	10,405	6,200	16,605	5,692	22,298	7,657
2009	30,128	11,025	6,219	17,244	5,894	23,138	6,990
2010	30,355	11,483	6,331	17,814	5,803	23,618	6,738
2011	30,509	11,698	6,451	18,149	5,864	24,013	6,496
2012	30,580	12,253	6,574	18,827	5,824	24,651	5,929
2013	30,706	12,385 ^P	6,822 ^P	19,207 ^P	5,702 ^P	24,910 ^P	5,796 ^P
2013 95% CI (+/-)		134	98	125	94	105	105

Notes

1) Source: Labour Force Survey.

2) Males aged 19 - 64 and females aged 19 - 59.

3) Estimates were revised in November 2014 following a reweighting of the Labour Force Survey (LFS) covering 2001 to 2013, more information is available at:

<http://www.ons.gov.uk/ons/guide-method/method-quality/specific/labour-market/articles-and-reports/revisions-to-labour-force-survey-estimates.pdf>

P) Provisional estimate - these estimates will be finalised in March 2015.

Table 14.1: Level Of Highest Qualification Held By Economically Active Adults In England (Quarter 4)¹ - percentages**(REVISED 26th November 2014³)**

Year	Economically active adults ³ (thousands)	Level 4 and above	Level 3	Level 3 and above	Level 2	Level 2 and above	Below Level 2 (incl no qualifications)
2006	24,350	35.8	21.0	56.9	19.5	76.4	23.6
2007	24,540	36.9	21.3	58.2	19.3	77.6	22.4
2008	24,839	37.1	21.2	58.3	20.0	78.3	21.7
2009	24,847	39.2	21.0	60.1	20.4	80.6	19.4
2010	24,977	40.5	21.1	61.6	20.0	81.6	18.4
2011	25,132	40.8	21.4	62.2	20.0	82.2	17.8
2012	25,504	42.5	21.7	64.2	19.7	83.9	16.1
2013	25,546	43.2 ^P	22.0 ^P	65.2 ^P	19.1 ^P	84.3 ^P	15.7 ^P
2013 95% CI (+/-)		0.5	0.4	0.4	0.3	0.3	0.3

Table 14.2: Level Of Highest Qualification Held By Economically Active Adults In England (Quarter 4)¹ - volumes (thousands)**(REVISED 26th November 2014³)**

Year	Economically active adults ³	Level 4 and above	Level 3	Level 3 and above	Level 2	Level 2 and above	Below Level 2 (incl no qualifications)
2006	24,350	8,727	5,126	13,853	4,741	18,594	5,756
2007	24,540	9,066	5,224	14,290	4,746	19,036	5,504
2008	24,839	9,222	5,269	14,491	4,959	19,450	5,390
2009	24,847	9,735	5,210	14,945	5,069	20,014	4,832
2010	24,977	10,103	5,279	15,382	4,994	20,376	4,600
2011	25,132	10,241	5,388	15,629	5,036	20,665	4,467
2012	25,504	10,848	5,536	16,384	5,025	21,409	4,095
2013	25,546	11,033 ^P	5,624 ^P	16,656 ^P	4,882 ^P	21,538 ^P	4,008 ^P
2013 95% CI (+/-)		125	92	113	89	89	89

Notes

1) Source: Labour Force Survey.

2) Economically active adults are defined as men aged 18 to 64 and women aged 18 to 59 either in employment or International Labour Organisation unemployed.

3) Estimates were revised in November 2014 following a reweighting of the Labour Force Survey (LFS) covering 2001 to 2013, more information is available at:

<http://www.ons.gov.uk/ons/guide-method/method-quality/specific/labour-market/articles-and-reports/revisions-to-labour-force-survey-estimates.pdf>

P) Provisional estimate - these estimates will be finalised in March 2015.

Table 15: Vocational Qualification Achievements in the UK by Qualification Type, 2006 (October) to 2014 (September)

Quarter	National Vocational Qualification	Occupational Qualification	Qualifications and Credit Framework Qualification	Vocationally Related Qualification	Other Vocational Qualifications	Total
October 2006 to December 2006	121,300	7,100	-	411,400	382,600	922,400
January 2007 to March 2007	126,600	5,700	-	406,800	393,800	932,900
April 2007 to June 2007	129,600	6,000	400	507,900	678,200	1,322,100
July 2007 to September 2007	252,900	8,000	500	920,500	1,151,500	2,333,400
Total 2006/07 Academic Year	630,400	26,800	900	2,246,600	2,606,200	5,510,900
October 2007 to December 2007	128,700	4,900	1,300	408,500	423,500	966,900
January 2008 to March 2008	140,700	4,900	4,600	426,000	500,900	1,077,200
April 2008 to June 2008	170,600	6,400	8,600	643,100	755,700	1,584,400
July 2008 to September 2008	287,900	8,300	19,200	983,800	1,416,700	2,715,800
Total 2007/08 Academic Year	727,900	24,500	33,700	2,461,400	3,096,800	6,344,300
October 2008 to December 2008	164,100	5,800	16,400	416,200	474,500	1,077,000
January 2009 to March 2009	169,600	5,300	39,300	409,900	590,400	1,214,500
April 2009 to June 2009	216,400	6,300	62,000	715,900	829,300	1,830,000
July 2009 to September 2009	372,600	9,100	102,600	1,064,800	1,591,600	3,140,800
Total 2008/09 Academic Year	922,900	26,500	220,300	2,606,800	3,485,800	7,262,200
October 2009 to December 2009	212,000	6,000	85,100	414,700	457,500	1,175,300
January 2010 to March 2010	204,000	5,100	135,200	388,000	552,700	1,285,000
April 2010 to June 2010	213,500	5,700	203,000	726,100	831,100	1,979,300
July 2010 to September 2010	349,500	6,400	353,700	1,078,700	1,727,400	3,515,700
Total 2009/10 Academic Year	979,000	23,200	777,000	2,607,500	3,568,600	7,955,300
October 2010 to December 2010	179,600	6,200	274,800	285,700	422,900	1,169,300
January 2011 to March 2011	155,300	4,100	454,400	166,300	486,500	1,266,600
April 2011 to June 2011	128,600	3,600	722,300	385,700	670,900	1,911,100
July 2011 to September 2011	124,300	3,600	1,384,700	561,800	1,473,700	3,548,000
Total 2010/11 Academic Year	587,800	17,500	2,836,200	1,399,600	3,054,000	7,895,100
October 2011 to December 2011	51,000	2,000	807,200	55,800	355,300	1,271,400
January 2012 to March 2012	31,100	1,000	821,500	51,300	479,700	1,384,500
April 2012 to June 2012	22,600	700	1,225,900	195,100	672,300	2,116,500
July 2012 to September 2012	24,200	900	2,428,700	273,700	1,285,700	4,013,200
Total 2011/12 Academic Year	128,800	4,600	5,283,400	575,800	2,793,000	8,785,600
October 2012 to December 2012	11,800	200	1,016,300	21,100	295,900	1,345,300
January 2013 to March 2013	6,700	100	985,400	22,500	406,900	1,421,700
April 2013 to June 2013	5,200	100	1,728,100	142,600	587,300	2,463,400
July 2013 to September 2013	5,100	100	2,507,400	162,200	1,283,100	3,957,900
Total 2012/13 Academic Year	28,700	600	6,237,200	348,500	2,573,300	9,188,300
October 2013 to December 2013	3,000	100	975,000	12,400	237,200	1,227,700
January 2014 to March 2014	1,900	-	1,072,600	12,900	379,600	1,467,000
April 2014 to June 2014	1,400	-	1,539,700	75,500	526,600	2,143,300
July 2014 to September 2014	1,400	-	2,298,100	78,800	1,317,900	3,696,200
Total 2013/14 Academic Year	7,800	100	5,885,300	179,700	2,461,300	8,534,200

Notes

- 1) This table covers all levels of vocational qualifications reported through Ofqual. Data are supplied by awarding organisations.
- 2) For data relating to Vocational Qualifications, the Academic year runs from October to September. For example, the 2006/07 academic year runs from October 2006 to September 2007.
- 3) The data in this table has been subjected to revisions.
- 4) Please see general footnotes and Vocational Qualifications footnotes section for further information on these tables.

Table 16: Adult (19+) FE and Skills Participation by Level (2014/15 – in-year estimates) – Learner Volumes

		Funded Learners	
		2014/15	
		August to October (provisional)	
		Level	
Total Learners			1,396,100
Participation	of which...	Below Level 2 (excluding English and maths)	243,200
		English and maths	551,600
		Full Level 2	422,200
		Full Level 3	308,300
		Level 2	560,800
		Level 3	325,500
		Level 4+	24,300
		No Level Assigned	239,600

Table 17: Adult (19+) FE and Skills – English and Maths Participation by Level (2014/15 – in-year estimates) – Learner Volumes

		Funded Learners	
		2014/15	
		August to October (provisional)	
		Level	
Total Learners			551,600
Participation	of which...	of which English	402,600
		of which entry level	55,000
		of which level 1	169,700
		of which level 2	182,100
		of which maths	372,500
		of which entry level	36,200
		of which level 1	164,500
		of which level 2	176,800
		of which ESOL (English for Speakers of Other Languages)	72,400
		of which entry level	60,000
		of which level 1	9,400
		of which level 2	3,700

Table 18: Adult (18+) FE and Skills - Offender Learning Participation by Level (2014/15 – in-year estimates) – Learner Volumes

		Funded Learners	
		2014/15	
		August to October (provisional)	
		Level	
Total Offender Learners			50,800
Participation	of which...	Below Level 2 (excluding English and maths)	30,300
		English and maths	15,000
		Full Level 2	7,900
		Full Level 3	-
		Level 2	17,500
		Level 3	200
		Level 4+	-
		No Level Assigned	20,800

Notes

1) These tables include Apprenticeships, Workplace Learning, Community Learning and Education and Training provision taken at General Further Education Colleges (including Tertiary), Sixth Form Colleges, Special Colleges (Agricultural and Horticultural Colleges and Art and Design Colleges), Specialist Colleges and External Institutions.

2) These tables show in-year estimates for 2014/15. Tables 1, 3 and 7 show full year volumes for previous years. It is not possible to directly compare provisional 2014/15 estimates with figures for previous years.

3) Figures for English and maths (previously Skills for Life) include GCSEs, Functional Skills, Adult Basic Skills Certificates including ESOL Certificates, and Qualifications and Credit Framework Certificates and Awards in English and maths.

4) Provisional in-year data for 2014/15 show 173,500 learners benefited from support for the unemployed (those nearest the workforce), 170,700 of which were aged 19+. These are defined as those learners reporting that they were in receipt of Employment and Support Allowance - Work Related Activity Group (ESA WRAG), Jobseeker's Allowance (JSA) or Universal Credit (if unemployed and looking for work).

5) An offender learner may be counted more than once in table 18 if they participated in learning at different institutions during 2014/15.

6) Table 18 includes 7,300 learners who were enrolled on OLASS education assessments in English and/or maths.

7) Please see the general footnotes section for further information on these tables.

Table 19: All Age Apprenticeship Participation by Level and Age (2014/15 – in-year estimates) – Learner Volumes

Funded Apprentices		
2014/15		
	Age	August to October (provisional)
Intermediate Level Apprenticeship	Under 19	86,300
	19-24	122,300
	25+	121,900
	Total	330,500
	of which 19+	244,200
Advanced Level Apprenticeship	Under 19	39,800
	19-24	104,800
	25+	89,000
	Total	233,600
	of which 19+	193,800
Higher Apprenticeship	Under 19	600
	19-24	5,100
	25+	9,700
	Total	15,400
	of which 19+	14,800
All Apprenticeships	Under 19	124,500
	19-24	229,300
	25+	219,900
	Total	573,700
	of which 19+	449,200

Notes

1) This table shows in-year estimates for 2014/15. Apprenticeship participation for earlier years are available in Table 5 of this release. It is not possible to directly compare provisional 2014/15 estimates with figures for previous years.

2) Learners participating on Trailblazers are included within the total apprenticeship figures. We will report on Trailblazers as a separate category as soon as we have a reliable estimate of numbers from the ILR.

3) 'All Apprenticeships' counts each Apprenticeship learner only once regardless of how many Apprenticeship programmes they participated in. Each learner is also counted in the totals for each Apprenticeship level they participated in.

4) Figures for 2014/15 include Apprenticeships through the Employer Ownership Pilot.

5) Please see the general footnotes and the Apprenticeships footnotes section for further information on this table.

Table 20.1: All Age Apprenticeship Programme Starts by Level and Age (2014/15 – in-year estimates)

		2014/15
		Quarter 1 August to October (provisional)
	Age	
Intermediate Level Apprenticeship	Under 19	34,800
	19-24	26,400
	25+	24,900
	Total	86,100
	of which 19+	51,300
Advanced Level Apprenticeship	Under 19	18,700
	19-24	20,200
	25+	18,300
	Total	57,200
	of which 19+	38,500
Higher Apprenticeship	Under 19	500
	19-24	1,200
	25+	2,300
	Total	4,000
	of which 19+	3,500
All Apprenticeships	Under 19	54,100
	19-24	47,900
	25+	45,500
	Total	147,500
	of which 19+	93,500

Table 20.2: All Age Apprenticeship Framework Achievements by Level and Age (2014/15 – in-year estimates)

		2014/15
		Quarter 1 August to October (provisional)
	Age	
Intermediate Level Apprenticeship	Under 19	12,700
	19-24	11,000
	25+	10,800
	Total	34,500
	of which 19+	21,800
Advanced Level Apprenticeship	Under 19	4,800
	19-24	7,800
	25+	8,400
	Total	21,000
	of which 19+	16,200
Higher Apprenticeship	Under 19	100
	19-24	300
	25+	400
	Total	700
	of which 19+	700
All Apprenticeships	Under 19	17,600
	19-24	19,100
	25+	19,600
	Total	56,200
	of which 19+	38,700

Notes

- 1) This table shows in-year estimates for 2014/15. Apprenticeship starts and achievements figures for earlier years are available in Table 6 of this release. It is not possible to directly compare provisional 2014/15 estimates with figures for previous years.
- 2) Trailblazer starts are included within the total apprenticeship figures. We will report on Trailblazers as a separate category as soon as we have a reliable estimate of numbers from the ILR.
- 3) Figures for 2014/15 include Apprenticeships through the Employer Ownership Pilot.
- 4) Please see the general footnotes and the Apprenticeships footnotes section for further information on these tables.

Table 21.1: Starts on the Apprenticeship Grant for Employers Scheme (AGE 16 to 24) - Pipeline Starts Payments Made (February 2012 to October 2014)

Age	2014/15		Programme to Date	
	August to October (provisional)		February 2012 to October 2014 (provisional)	
	Payments Made	Pipeline Starts	Payments Made	Pipeline Starts
Intermediate Level Apprenticeship				
Under 19	200	12,600	50,900	12,600
19-24	100	4,800	27,900	4,800
Total	300	17,400	78,800	17,400
Advanced Level Apprenticeship				
Under 19	100	4,300	15,100	4,300
19-24	100	2,600	12,400	2,600
Total	100	6,900	27,500	6,900
Higher Apprenticeship				
Under 19	-	-	100	-
19-24	-	100	300	100
Total	-	100	400	100
All Apprenticeships				
Under 19	300	16,900	66,100	16,900
19-24	100	7,400	40,600	7,400
Total	400	24,300	106,700	24,300

Notes

1) AGE 16 to 24 was launched in February 2012. Payments are drawn down once the new Apprentice has been in post for 13 weeks, therefore Apprenticeships starting after 1 August 2014 are not included in the Payments Made column because they had not yet triggered a payment.

2) Pipeline Starts show those starting between August 2014 and October 2014 who have not yet qualified for a payment, but the payment would be made once the Apprentice has been in post for 13 weeks.

3) AGE 16 to 24 starts are defined through the Learning Delivery Funding and Monitoring Codes with values of 132 or 133 as per the ILR specification (http://webarchive.nationalarchives.gov.uk/20140108104635/http://www.theia.org.uk/ilr/ilrdocuments/201112_iirdetail.htm). These are validated by the Skills Funding Agency.

4) Starts in this table include learners aged 19-24 on application but aged 25 when learning started.

5) Starts in this table will also be counted in the main Apprenticeship tables.

6) Please see the general footnotes and the Apprenticeships footnotes section for further information on these tables.

Table 21.2: Starts on the Access to Apprenticeship Pathway (2011/12 to 2013/14)

	Age	2011/12	2012/13	2013/14	
		Full Year	Full Year	Full Year	
All starts on the Access to Apprenticeship pathway	Under 19	5,700	3,900	1,200	
	19-24	1,600	1,600	500	
	Total	7,200	5,500	1,700	
of which	have converted to paid employment to complete their Apprenticeship in any year	Under 19	2,400	1,400	800
		19-24	700	500	300
	Total	3,000	1,900	1,100	
	have not yet converted to paid employment to complete their Apprenticeship in any year	Under 19	3,300	2,500	500
		19-24	900	1,100	200
	Total	4,200	3,600	600	

Notes

1) People starting training under the Access to Apprenticeship pathway are not counted as an Apprentice until they secure paid employment to complete their Apprenticeship in the usual way.

2) The year indicates when the learner started on the Access to Apprenticeship pathway. Conversion to paid employment to complete an Apprenticeship does not necessarily occur in the same year as the learner started the Access to Apprenticeship pathway.

3) People shown in this table as having converted to paid employment to complete their Apprenticeship in the same year as they started on the Access to Apprenticeship pathway will also be counted as starts in the main Apprenticeship tables. People who convert to paid employment in subsequent years will be counted as participating Apprenticeship learners. This table includes conversions made in 2014/15 for learners who started in earlier years.

4) The Access to Apprenticeship pathway closed to new starts at the end of December 2013. This table includes some learners with a start date after December 2013 due to invalid data.

5) Please see the general footnotes and the Apprenticeships footnotes section for further information on these tables.

Table 22.1: Workplace Learning Starts by Level (2014/15 – in-year estimates)

		2014/15
		August to October (provisional)
Total Starts		11,900
of which...	Below Level 2	1,800
	Level 2	9,700
	Level 3	500
	Level 4+	-
	No Level Assigned	-
	Below Level 2 (excluding English and maths)	100
	English and maths	3,400
	Full Level 2	7,400
	Full Level 3	300

Table 22.2: Workplace Learning Achievements by Level (2014/15 – in-year estimates)

		2014/15
		August to October (provisional)
Total Achievements		9,900
of which...	Below Level 2	1,200
	Level 2	8,100
	Level 3	500
	Level 4+	-
	No Level Assigned	-
	Below Level 2 (excluding English and maths)	100
	English and maths	2,300
	Full Level 2	6,500
	Full Level 3	400

Notes

1) These tables show in-year estimates for 2014/15. Figures for earlier years are available in Table 8 of this release. It is not possible to directly compare provisional 2014/15 estimates with figures for previous years.

2) English and maths starts and achievements can be at Level 2 or Below Level 2.

3) These tables include some learners aged under 19 who are eligible for funding on certain Workplace Learning programmes.

4) Figures for English and maths (previously Skills for Life) include GCSEs, Functional Skills, Adult Basic Skills Certificates including ESOL Certificates, and Qualifications and Credit Framework Certificates and Awards in English and maths.

5) Please see the general footnotes and the Workplace Learning footnotes section for further information on these tables.

Table 23: Community Learning Participation by Type (2014/15 – in-year estimates) – Learner Volumes

		Funded Learners
Provision Type		2014/15 August to October (provisional)
	Total Learners	219,400
Participation	of which Personal and Community Development Learning	182,300
	of which Neighbourhood Learning in Deprived Communities	11,600
	of which Family English, Maths and Language	10,900
	of which Wider Family Learning	16,800

Notes

1) This table shows in-year estimates for 2014/15. Community Learning participation and achievement figures for earlier years are available in Table 9 of this release. It is not possible to directly compare provisional 2014/15 estimates with figures for previous years.

2) Please see the general footnotes and the Community Learning footnotes sections for further information on this table.

Table 24: Employer Ownership Pilot Starts (2012/13 to 2013/14)

				2012/13	2013/14	Programme to Date
				Full Year	Full Year	August 2012 to July 2014
Starts	Provision		Age			
	Apprenticeships	SASE Compliant	Under 19	200	700	800
			19-24	400	600	1,100
			25+	600	1,500	2,100
			Total	1,200	2,800	4,000
		Non-SASE Compliant	Under 19	-	100	100
			19-24	-	100	100
			25+	-	100	100
			Total	-	300	300
		All Apprenticeships	Under 19	200	700	900
			19-24	400	700	1,200
			25+	600	1,600	2,200
			Total	1,200	3,100	4,300
	Workplace Learning	QCF Training	Under 19	-	200	300
			19-24	100	600	700
			25+	300	2,600	2,900
			Total	400	3,400	3,800
		Non-QCF Training	Under 19	200	1,900	2,100
			19-24	1,000	4,200	5,200
			25+	4,300	17,900	22,200
			Total	5,500	24,000	29,500
		All Workplace Learning	Under 19	200	2,100	2,400
19-24			1,100	4,800	5,900	
25+			4,600	20,500	25,100	
Total			5,900	27,400	33,300	
All Employer Ownership Pilot Starts			Under 19	400	2,900	3,300
			19-24	1,500	5,500	7,000
			25+	5,200	22,100	27,300
			Total	7,200	30,500	37,600

Notes

- 1) Starts in this table will also be counted in the main Apprenticeship tables and Workplace Learning tables, as well as in FE and Skills participation figures.
- 2) The data sources for this table are Employer Ownership Pilots 1 and 2.
- 3) Data for Employer Ownership Pilot starts in 2014/15 cannot yet be reliably estimated and are excluded from this table. We will report on starts in 2014/15 as soon as we have a reliable estimate of numbers from the data collection.
- 4) SASE Compliant Apprenticeships are frameworks that conform to the Specification of Apprenticeship Standards for England (SASE). Non-SASE Compliant Apprenticeships are employer defined programmes.
- 5) QCF Training is learners starting aims that are accredited under the Qualifications and Credit Framework.
- 6) Please see the general footnotes for further information on this table.

Table 25: 24+ FE and Skills – Participation with 24+ Advanced Learning Loans (Level 3+) (2014/15 – in-year estimates) – Learner Volumes

Funded Learners		2014/15
		August to October (provisional)
Participation with 24+ Advanced Learning Loans	Total Learners	51,700
	of which Level 3	48,400
	of which Level 4+	3,400

Notes

1) This table includes Education and Training provision taken at General Further Education Colleges (including Tertiary), Sixth Form Colleges, Special Colleges (Agricultural and Horticultural Colleges and Art and Design Colleges), Specialist Colleges and External Institutions.

2) Please see the general footnotes for further information on this table.

Table 26: Traineeship Starts by Age (2014/15 – in-year estimates)

Age		2014/15
		August to October (provisional)
Total Traineeships	Under 19	3,500
	19-24	1,500
	Total	5,000

Notes

- 1) Age is reported as at 31st August of the academic year.
- 2) Please see the general footnotes for further information on this table.